

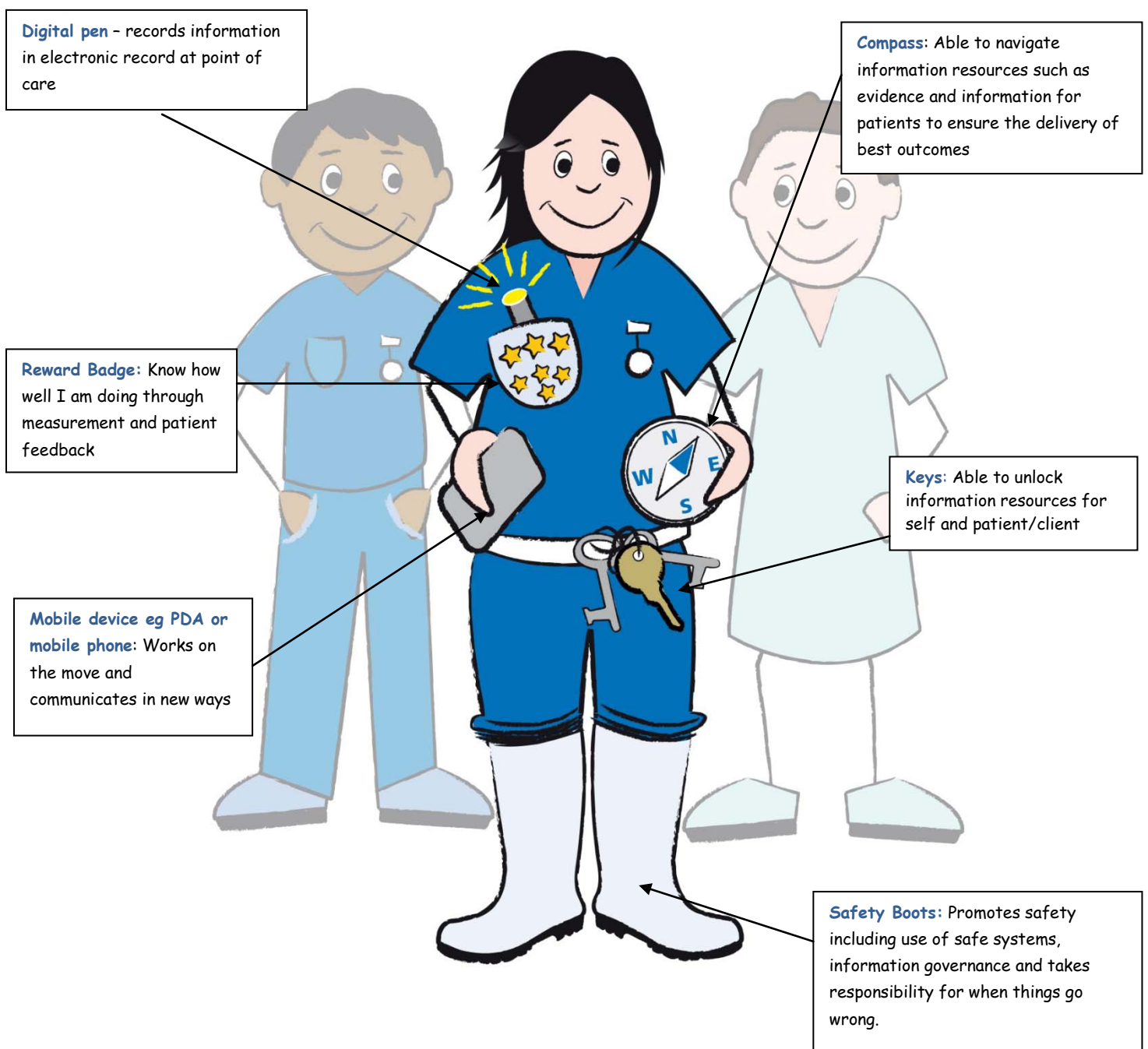
**Skills assessment:  
Using information in  
your practice**

# How do you measure up to IT?

We live in a world where information and technology is more available than it has ever been before. In our personal lives we have integrated much of this technology to the way we live day to day, online banking, looking for information online and planning our trips.

But do you use these skills in your practice?

## The technology enabled nurse/midwife



# Nursing Informatics - How are you developing?

Self Assess:

- Think about the statements below
- How are you demonstrating this skill?
- What more would help you to do it even better?



## **1 Do you know how your care measures up?**

Do you assess effectiveness of care delivery through self and peer review, benchmarking and formal evaluation?

Do you seek feedback from patients to understand how well you are doing?



## **2 Are you up to scratch with your record keeping?**

Do you create and use records including computerised records in a manner that complies with legislation, professional standards and organisational policies for record keeping?

Can you enter information while you are delivering care?

Can patients access and understand your records?



### **3 Can you unlock resources for your patients/clients?**

Do you support patients to adopt self care and health promotion strategies that encourage them to live healthily?

Do you always access, or help them to access, high quality information that helps them to understand as a routine part of your care?

Can you recognise those patients who need more help than others?



### **4 Can you work on the move and use technology to communicate in different ways with patients/clients?**

Are you making the most out of the existing technology you have available to you?

Have you thought about different ways of working that might deliver higher quality and more efficient care?

Have you thought about how technology might help you to care?



**5 Can you use evidence based information to ensure you are delivering the best care possible?**

Do you know how to access evidence to support the care you deliver and do you do this on a regular basis?

Are you able to, and do you regularly, look at the outcomes of your care?

Do you know how to evaluate evidence?

What information helps you to deliver care (for example assessment frameworks) - are they current and being used correctly?





**6 Do you think about safety and information governance when using technology?**

Do you report any concerns about technology through your organisations risk management processes?



Do you understand your responsibilities with regard to information held about patients and the rights of patients, for example with respect to sharing of information held about them?

Do you take care of your Smartcard and follow local procedures to protect the electronic system/s you use?

Make a note of where you think you are doing well and where more support would help:

	
➤	➤
➤	➤
➤	➤
➤	➤
➤	➤
➤	➤

Write down actions that you could personally take to develop your skills and when you hope to have achieved them by:

	
➤	➤
➤	➤
➤	➤
➤	➤

# NOTES