	SCG Guidance: How to Use the Religious or Other Belief System Affiliation List			
	Programme	NPFIT	Document Record ID Key	
	Sub-Prog / Project	Standards Consulting Group	NPFIT-FNT-TO-SCG-0057.05	
	Prog. Director	Ken Lunn	Status	Approved
	Owner	Keith Naylor	Version	1.0
	Author	Susan Hollins/Rae Long	Version Date	08/04/2009

SCG Guidance: How to Use the Religious or Other Belief System Affiliation List

Amendment History:

Version	Date	Amendment History
0.1	13/02/2009	First draft for comment
0.2	20/03/2009	2 nd draft following comments by the NHS Chaplaincy Community
0.3	31/03/2009	3 rd draft following comments by the NHS CFH Standards Consultancy Group
0.4	07/04/2009	Updated following additional minor comments
1.0	08/04/2009	Approved

Forecast Changes:

Anticipated Change	When
Once DSCN issued, and list added to NHS Data Dictionary links to be incorporated within this guidance	June 2009
Annual Review	March 2010

Reviewers:

This document must be reviewed by the following:

Name	Signature	Title / Responsibility	Date	Version
NHS Chaplaincy Community	NHS Chaplaincy Community	NHS Chaplaincy Community	13/02/2009	0.1
Susan Hollins	Susan Hollins	Project Manager, DH	31/03/2009	0.3
Davie Hay	Davie Hay	Standards Consultancy Lead (Acting)	31/03/2009	0.3
Bharat Sharma	Bharat Sharma	Standards Consultant	31/03/2009	0.3
Tom Seabury		Implementation Consultancy Lead (Acting)	31/03/2009	0.3
John May		Implementation Consultant	31/03/2009	0.3
Zac Whitewood-Moores	Zac Whitewood-Moores	Implementation Consultant	20/03/2009	0.2
Jay Kola		Implementation Consultant	31/03/2009	0.3
Jo Oakes		UKTC Training Lead	31/03/2009	0.3
Christian Hyde		Training Coordinator	31/03/2009	0.3

Approvals:

This document must be approved by the following:

Name	Signature	Title / Responsibility	Date	Version
Ken Lunn	Ken Lunn	Director of Data Standards and Products	07/04/2009	0.4
Keith Naylor	Keith Naylor	Head of DS&P Implementation	07/04/2009	0.4
NHS Chaplaincy	NHS Chaplaincy	NHS Chaplaincy Community	13/02/2009	0.1

Community	Community			
-----------	-----------	--	--	--

Distribution:

NHS Chaplaincy Community

SHA DQ Leads

Registration Staff in Primary and Secondary Care (PCT's, Acute, GP's)

NHS Information Managers

NHS Medical Records Managers

NHS Trainers

LSP's

ESP's

Document Status:

This is a controlled document.

Whilst this document may be printed, the electronic version maintained in FileCM is the controlled copy. Any printed copies of the document are not controlled.

Related Documents:

These documents will provide additional information.

Ref no	Doc Reference Number	Title	Version
1	NPFIT-SHR-QMS-PRP-0015	Glossary of Terms Consolidated.doc	13
2	http://www.dh.gov.uk/en/Publicationsandstatistics/Publications/PublicationsPolicyAndGuidance/DH_4073108	NHS Chaplaincy Meeting the Religious and Spiritual Needs of Patients and Staff	
3	http://www.dh.gov.uk/en/Publicationsandstatistics/Publications/PublicationsPolicyAndGuidance/DH_093133	Religion or Belief A Practical Guide for the NHS	
4	http://www.dh.gov.uk/en/Publicationsandstatistics/Publications/PublicationsPolicyAndGuidance/Browsable/DH_5319155	The Equality Act (Religion or Belief) Regulations 2006 came into force on 30 April 2007. Part 2 of the Act sets out provisions prohibiting discrimination on grounds of religion or belief in the provision of goods, facilities and services, education, the use and disposal of premises and the exercise of public functions.	
5	http://www.dh.gov.uk/en/Publicationsandstatistics/Publications/PublicationsPolicyAndGuidance/DH_075463	Single Equality Scheme 2007-2010	

Glossary of Terms:

List any new terms created in this document. Mail the NPO Quality Manager to have these included in the master glossary above [1].

Term	Acronym	Definition
Standards Consultancy Group	SCG	A consultancy service within Data Standards and Products, part of the Technology Office of NHS Connecting for Health. The group has been established to provide guidance and assistance in the development and implementation of standards in a consistent manner. The group's objective is to develop the Data Standards and Products portfolio, to enable a full longitudinal electronic healthcare record that supports clinical practice.
Department of Health	DH	Provides health and social care policy, guidance and publications for NHS and social care professionals
United Kingdom Terminology Centre	UKTC	The UK Terminology Centre of the International Health Terminology Standards Development Organisation (IHTSDO) A not-for-profit association that develops and promotes use of SNOMED CT to support safe and effective health information exchange. SNOMED CT is a clinical terminology and is considered to be the most comprehensive, multilingual healthcare terminology in the world.
Terminology Reference Data Update Distribution Service	TRUD	A mechanism for the UK Terminology Centre to license and distribute reference-data to interested parties. The preferred Terminology distribution method of the UK Terminology Centre and NHS Connecting for Health. Registered users of this service will be granted access to download reference data for which they are licensed.

Contents

1 Purpose6

 1.1 Religious affiliation6

 1.2 Religion6

 1.3 Belief System6

2 Audience6

3 Background7

4 Questioning the Patient8

 4.1 General Guidance8

 4.2 Muslim Patients9

 4.3 Jewish Patients9

5 Rationale9

6 General Do's and Don't9

7 Maintenance and Update Process Plans.....10

Appendix 1 Additional Reference Materials11

Appendix 2 Process Flow – Questioning the Patient12

Appendix 3 Process Flow for Future Maintenance of the Religious and Other Belief System Affiliation List13

Appendix 4 Religious or Other Belief Systems Affiliation List15

Appendix 5 Top Ten Most Common Religious Affiliations19

1 Purpose

The purpose of this document is to provide guidance on the use and recording of patients' religious or other belief system affiliation.

The need to document religious and other belief system affiliations is outlined in the Equality and Human Rights Strategy – Department of Health¹, and without a consistent way of recording this, standards adhering to this need may not be fully realised. Operationally the NHS uses the religious affiliation item in order to organise holistic and pastoral care.

1.1 Religious affiliation

Religious affiliation is the self-identified association of a person with a religion, denomination or sub-denominational religious group. ie the church an individual belongs to "I am a Methodist".

1.2 Religion

Religion is a system of beliefs, including belief in the existence of at least one of the following: a human soul or spirit, a deity or higher being or self after the death of one's body, for example, Methodism etc.

1.3 Belief System

There are varieties of belief systems: these can be religious, political, cultural etc. One definition is this: "A shared system of beliefs and values that systematically define a way of perceiving the social, cultural, physical and psychological world." Essentially a belief system is just that: a defining system or framework which supports and informs our religious, spiritual, psychological, cultural, social and metaphysical understanding, knowledge and perception. A belief system also informs and may set standards for behaviour and activity, eg a committed vegan does not eat meat, fish or fowl, nor uses any leather goods. Being a vegan is a commitment to living life in a particular way. In the same way, a humanist lives his or her life according to humanist precepts, which will inform the way in which they regard other people, and their understanding of human rights. So a belief system is not solely identified with a religious faith.

2 Audience

The intended audience for this guidance is the NHS Chaplaincy Community, NHS Trainers and all NHS staff who are involved in registering, accessing and updating patient information and any other NHS employee who directly interfaces with patients.

¹ <http://www.dh.gov.uk/en/Managingyourorganisation/Equalityandhumanrights/index.htm>

3 Background

There are no existing international or national standards for religion or religious affiliation. There are UK wide data lists, however these are disparate. These include the Electronic Staff Records list, Census list and bespoke software supplier formed lists etc. Many of these depict the religion itself though as the concept and not the religious belief or affiliation, ie Methodist v Methodism.

During May to July 2007 the first draft of the Religions/Religious Affiliations List was sent out for consultation to chaplaincy groups in the UK. The NHS Healthcare chaplaincy workforce includes Jewish, Muslim, Hindu and Sikh representatives in paid and voluntary chaplaincy appointments as well as Christian chaplains. The draft List was also sent to the following Healthcare Chaplaincy bodies: The Hospital Chaplaincies Council of the Church of England; The Multi-Faith Group for Healthcare Chaplaincy. The responses received from this consultation informed the further development of the list. Consultation was also undertaken with the Hindu Centre in Oxford and with various individual healthcare chaplains, especially Muslim colleagues. The current edition of the list (included at Appendix 4) was sent out for further consultation in early January 2009, and all future additional requests for the list will undergo the same consultation (see Appendix 3).

The Information Standards Board for Health and Social Care supported the Change to an Information Standard Religious and Other Belief Systems Affiliation submission, and conditional approval was given at the January 2009 board meeting.²

This guidance has been produced for the NHS by the Reverend Susan Hollis, the Project Manager (DH), for the Improving Patient Access to Spiritual and Religious Care Project, in conjunction with NHS Connecting for Health who developed the Change to an Information Standard submission. The guidance includes clear instructions about how the question for religion/belief system/affiliation is asked and what to record if 'religion' rather than affiliation is expressed by the patient. There is a clear need to identify some of the key Christian denominations, and there is a similar need to identify the key Jewish and Muslim traditions.

A starter list of the top ten most common religious affiliations is also included at Appendix 5.

² <http://www.isb.nhs.uk/docs/religious-and/>

4 Questioning the Patient

4.1 General Guidance

On admission to hospital it has long been the practice for patients to be asked if they have a particular religion. Religious and other belief systems affiliation is always self declared (or declared on behalf of the patient by a parent or carer). It is normally recorded as part of the clinical assessment, so that supplementary questions can be asked about the patients care needs, in relation to any stated religious or other belief systems affiliation.

When questioned a patient's response maybe very broad, such as Christian, Muslim or Agnostic, or it maybe a more detailed name of a particular faith/religious affiliation and/or a particular group within this. (see Appendix 2)

Q) Do you have a religious or other belief?

A) I'm a Spiritualist, I'm Hindu, I'm Church of England etc.

You may need to support the patient to be clearer about what they mean, eg:

Q) Do you have a religious or other belief?

A) No, I don't really have a religion but I was christened in the Church of England.

In the example above, check if the patient would like Church of England, Agnostic or Not Religious recorded.

Also a patient may say "Well I was brought up as a Roman Catholic, but I don't go to church or practise anymore". Check if they want this to be recorded as Roman Catholic.

- Where a patient indicates that they do not belong to a particular religious or other belief system affiliation, then record this as **No Religious Affiliation**
- Where a patient does not want to disclose this information then record this as **Declines to Disclose**
- Where a patient is not asked, record this as **Patient Religion Unknown**
- Where a patient indicates they are unsure, record this as **Agnostic**
- Where a patient indicates a religious or other belief system affiliation that does not appear in the list, record this as **Religion (belief affiliation)**³
- Where a patient indicates that they are not religious, record this as **Not religious**, unless the patient clearly indicates that they are **Atheist**, in which case this would be recorded
- If a patient lacks the capacity to answer, it maybe appropriate to ask a next of kin. Or it maybe better to wait until the patient is able to answer for themselves at a later stage, until it is known record this as **Patient Religion Unknown**.

³ This is known as Religion (Other not listed) within the NHS Data Dictionary

4.2 Muslim Patients

When questioning Muslim patients, ask if they are happy for their religious affiliation to be recorded as Muslim, or as one of the specific groups within Islam, e.g. Shia, Sunni etc.

4.3 Jewish Patients

When questioning Jewish patients, ask if they are happy for their religious affiliation to be recorded as Jewish or as one of the specific groups within Judaism, e.g. Reform, Orthodox etc.

5 Rationale

The recording of this information is to assure whole patient care and is not only for the purposes of providing religious and spiritual care through the hospital chaplaincy/pastoral and spiritual care service:

- A Jehovah's Witness patient will have specific needs which impact their clinical care
- A Muslim patient will require halal food, and may also want privacy around their bed so that they may pray

Some patients may choose not to share this information with you even though they may have a specific religious or other belief system affiliation.

6 General Do's and Don't

- Gain familiarity with the purpose for the collection of this information. This information supports the total care of the patient – clinical, pastoral/spiritual/religious and dietary
- Try to familiarise yourself with the core contents of the (Appendix 4) and the way it works on the system so that you can record patients' religious affiliation confidently. eg Atheist and Agnostic are included as affiliations
- There will be a small selection of religious and other belief system affiliations that occur frequently, with a larger number of religious and other belief system affiliations occurring rarely
- Make sure that the religious and other belief system affiliation that is recorded reflects the patient's description and identifies their affiliation as far as possible
- Try to avoid making assumptions about what religious or other belief system affiliation you think the patient might have, eg try not to assume that because a patient wears long robes that they are Muslim or Hindu. Occasionally a person's religious belief will vary from the cultural dominance of their clothing. Some Somalis are Christian; some Pakistani and Indian people are Christian
- The way in which the list appears will depend upon the electronic record system used in your organisation, eg there may be a drop-down list from

which to identify and record the patient's religious or other belief system affiliation; there may also be a free-text facility to record less well-known religious affiliation and beliefs

- The list gives the various denominations (types) within a religious group. e.g. Christian will include denominations (types) such as Methodist, Presbyterian, and Pentecostal; Muslim includes Shi'ite, Sunni, Ismaili and Ahmadi
- Where a patient lacks the capacity to answer this question then it may be best to ask a next-of-kin or the patient themselves at a later stage
- Where this information is held on a paper record for later transfer to an electronic system, check the accuracy of the answer before proceeding to the next field.

7 Maintenance and Update Process Plans

Maintenance of the list will be performed through an agreed process through the Standards Consulting Group within Data Standards and Products, and released through Snomed CT as a 'subset'. The NHS Data Dictionary will be updated accordingly as part of this process.

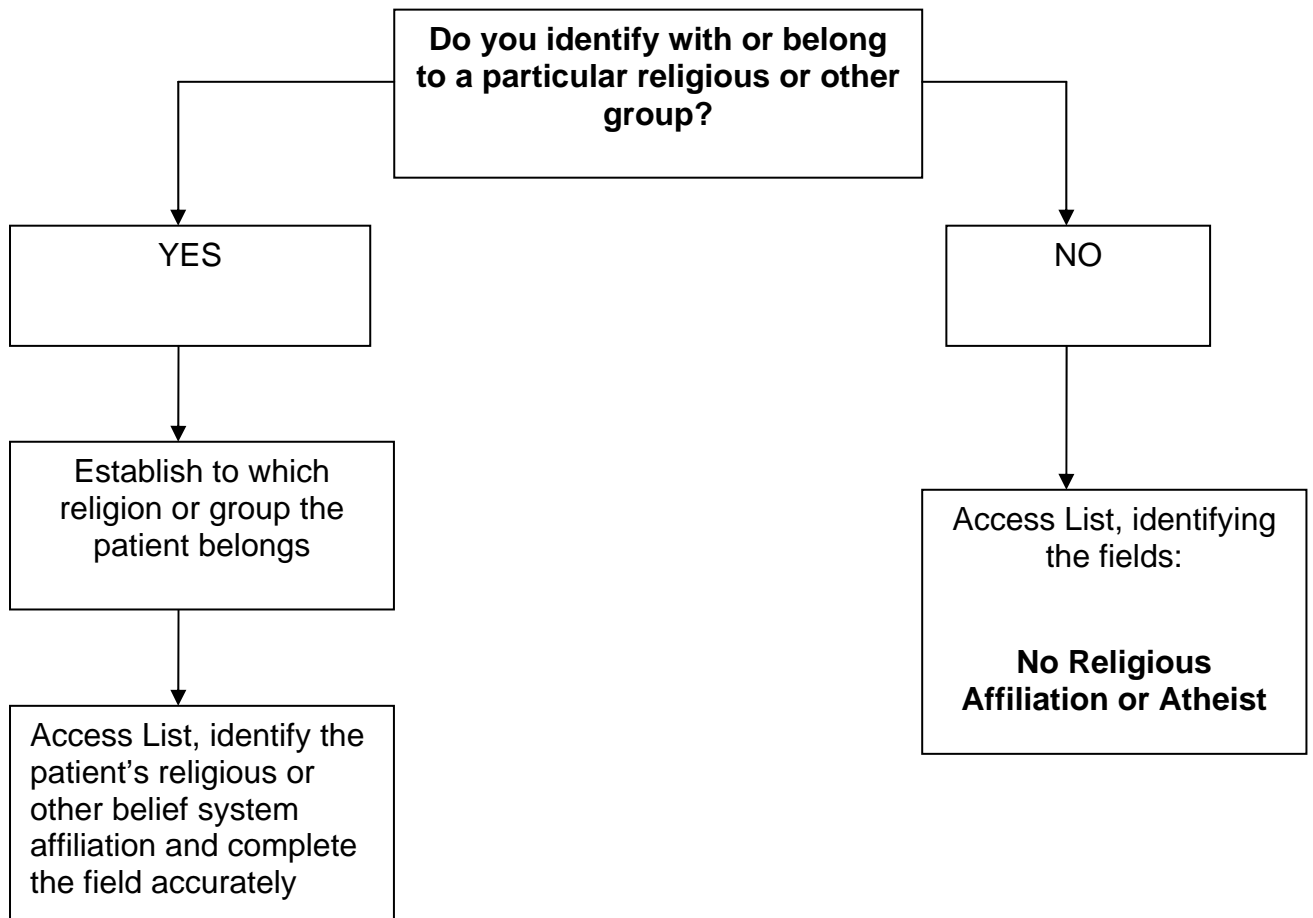
This will be maintained as part of the current Snomed CT Release and Maintenance process. Should new terms be required in future, these will be processed through the Snomed CT request mechanism if the term is not available in Snomed CT. If it is available, but not in the list, this will be requested via the Data Standards and Products team, and released in the next version of the list. Details with regard to adding terms in the interim phases of releases are covered by the 'Subset Maintenance Process' enlisted by NHS CFH and the UKTC (United Kingdom Terminology Centre).

A process flow chart for additional requests to be added to the list can be found in Appendix 3.

Appendix 1 Additional Reference Materials

Information Standards Board for Health and Social Care – January Board Output	http://www.isb.nhs.uk/docs/religious-and/
Equality and Human Rights Strategy - DH	http://www.dh.gov.uk/en/Managingyourorganisation/Equalityandhumanrights/index.htm
Terminology Reference Data Update Distribution Service	https://www.uktcregistration.nss.cfh.nhs.uk/trud/

Appendix 2 Process Flow – Questioning the Patient

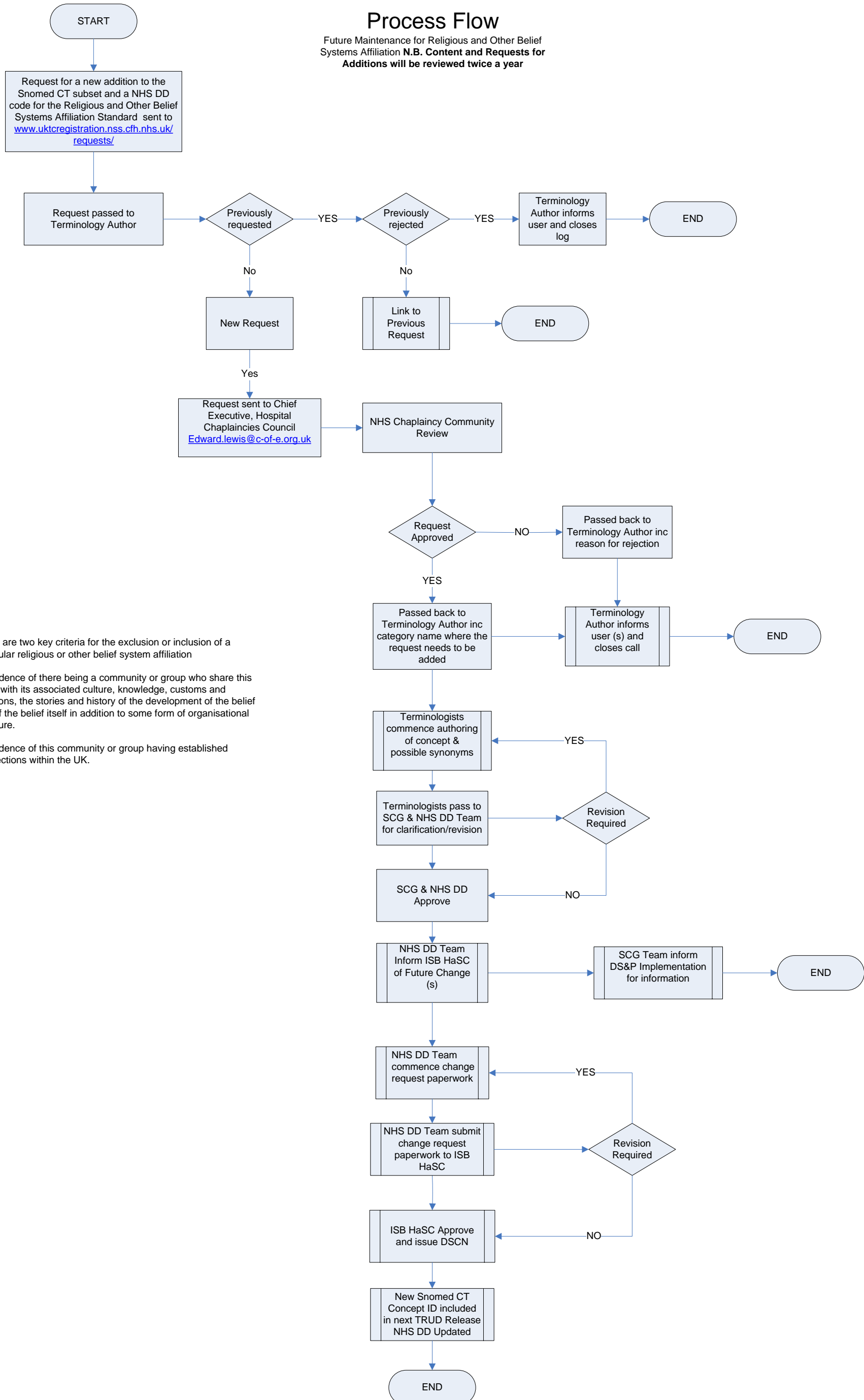


Appendix 3 Process Flow for Future Maintenance of the Religious and Other Belief System Affiliation List

See process flow on the next page

Process Flow

Future Maintenance for Religious and Other Belief Systems Affiliation **N.B. Content and Requests for Additions will be reviewed twice a year**



There are two key criteria for the exclusion or inclusion of a particular religious or other belief system affiliation

1. Evidence of there being a community or group who share this belief with its associated culture, knowledge, customs and traditions, the stories and history of the development of the belief and of the belief itself in addition to some form of organisational structure.

2. Evidence of this community or group having established connections within the UK.

Appendix 4 Religious or Other Belief Systems Affiliation List

N.B. shaded code entries will be included in the October 2009 TRUD⁴ Release

CATEGORY	TERM	CONCEPTID	DESCRIPTIONID	NHS DD Code
NONE				
	Atheist	160542002	250262011	L1
	Not religious	160552003	250277015	L2
OTHER				
	Agnostic	160567004	250299011	K1
	Ancestral Worship	373841000000106	734831000000117	K2
	Animist	373831000000102	734801000000111	K3
	Anthroposophist	367831000000100	712691000000118	K4
	Black Magic	367861000000105	712791000000113	K5
	Brahma Kumari	367871000000103	712801000000112	K6
	British Israelite	368051000000100	713341000000111	K7
	Chondogyo	491791000000108	1058721000000117	K8
	Confucianist	367901000000103	712881000000119	K9
	Deist	368351000000102	714271000000112	K10
	Humanist	303721000000103	539441000000110	K11
	Infinite Way	368341000000100	714241000000118	K12
	Kabbalist	367911000000101	712911000000119	K13
	Lightworker	367921000000107	712941000000118	K14
	New Age Practitioner	367941000000100	713021000000118	K15
	Native American Religion	368511000000109	714711000000111	K16
	Pantheist	368381000000108	714361000000114	K17
	Patient religion unknown	205081000000105	314481000000111	N1
	Peyotist	368371000000106	714331000000116	K18
	Radha Soami SYN Sant Mat	368331000000109	714201000000116 714231000000110	K19
	Religion (Belief affiliation)	373921000000109	735071000000111	K20
	Santeri	368391000000105	714411000000115	K21
	Satanist	367961000000104	713061000000114	K22
	Scientologist	344071000000106	713081000000117	K23
	Secularist	373851000000109	734861000000110	K24
	Shumei	367991000000105	713181000000118	K25
	Shinto	429547003	2695239015	K26
	Spiritualist	429171004	2692721018	K27
	Swedenborgian SYN Neo-Christian	368291000000102	714071000000116 714081000000119	K28
	Taoist	429543004	2694761018	K29
	Unitarian-Universalist	368411000000105	714451000000116	K30
	Universalist	368401000000108	714421000000114	K31

⁴ <https://www.ukcregistration.nss.cfh.nhs.uk/trud/>

SCG Guidance: How to Use the Religious or Other Belief System Affiliation List

NPFIT-FNT-TO- SCG-0057.05

08/04/2009 / Approved / v1.0

	Vodun	368011000000104	713211000000117	K32
	Yoruba	368021000000105	713241000000116	K33
BUDDHIST	Buddhist	309687009	453156010	B1
	Mahayana Buddhist	429533002	2693056016	B2
	New Kadampa Tradition Buddhist	429527006	2692745019	B3
	Nichiren Buddhist	428666001	2691802017	B4
	Pure Land Buddhist	428820009	2695628010	B5
	Theravada Buddhist	428407001	2692549011	B6
	Tibetan Buddhist	428496003	2694566014	B7
	Zen Buddhist	427981006	2694018011	B8
CHRISTIAN	Christian	160549006	250274010	C1
	Amish	368041000000103	713311000000110	C2
	Anabaptist	428315004	2694897016	C3
	Anglican	271448006	406240013	C4
	Apostolic Pentecostalist	344121000000106	642431000000118	C5
	Armenian Catholic	428816005	2691976017	C6
	Armenian Orthodox	344141000000104	642491000000117	C7
	Baptist	160557009	250284011	C8
	Brethren	373911000000103	735041000000117	C9
	Bulgarian Orthodox	368061000000102	713371000000117	C10
	Calvinist	429539003	2695220013	C11
	Catholic: non Roman Catholic	368071000000109	713401000000115	C12
	Celtic Christian	368081000000106	713431000000114	C13
	Celtic Orthodox Christian	368091000000108	713461000000116	C14
	Chinese Evangelical Christian	368101000000100	713491000000110	C15
	Christadelphian	160566008	250298015	C16
	Christian Existentialist	368111000000103	713521000000113	C17
	Christian Humanist	368121000000109	713551000000115	C18
	Christian Scientist	160544001	250267017	C19
	Christian Spiritualist	428504005	2694508012	C20
	Church in Wales	368131000000106	713581000000114	C21
	Church of England	344151000000101	642551000000112	C22
	Church of God of Prophecy	344161000000103	642581000000118	C23
	Church of Ireland	368141000000102	713611000000115	C24
	Church of Scotland	344171000000105	642611000000112	C25
	Congregationalist	427874000	2693984011	C26
	Coptic Orthodox	428373004	2695421010	C27
	Eastern Catholic	428376007	2693091012	C28
	Eastern Orthodox	368151000000104	713641000000119	C29
	Elim Pentecostalist	427729003	2693924013	C30
	Ethiopian Orthodox	428378008	2693985012	C31
	Evangelical Christian	368161000000101	713671000000113	C32
	Exclusive Brethren	344281000000101	642921000000110	C33
	Free Church	344211000000108	642701000000115	C34
	Free Church of Scotland	344221000000102	642731000000114	C35
	Free Evangelical Presbyterian	368171000000108	713701000000112	C36
	Free Methodist	373871000000100	734911000000118	C37

SCG Guidance: How to Use the Religious or Other Belief System Affiliation List

NPFIT-FNT-TO- SCG-0057.05

08/04/2009 / Approved / v1.0

	Free Presbyterian	368181000000105	713731000000118	C38
	French Protestant	373931000000106	735091000000110	C39
	Greek Catholic	368191000000107	713761000000111	C40
	Greek Orthodox	429158002	2692760016	C41
	Independent Methodist	373881000000103	734941000000117	C42
	Indian Orthodox	373891000000101	734971000000111	C43
	Jehovah's Witness	504463011	504463011	C44
	Judaic Christian	368201000000109	713791000000117	C45
	Lutheran	427755002	2694444017	C46
	Mennonite	368221000000100	713851000000117	C47
	Messianic Jew	368421000000104	714481000000110	C48
	Methodist	160558004	250285012	C49
	Moravian	344231000000100	642761000000116	C50
	Mormon	344081000000108	642531000000117	C51
	Nazarene Church Syn Nazarene Methodist	344241000000109	642791000000110 713881000000111	C52
	New Testament Pentacostalist	344251000000107	642851000000110	C53
	Nonconformist	276119007	412121016	C54
	Old Catholic	368241000000107	713921000000117	C55
	Open Brethren	344271000000103	642891000000119	C56
	Orthodox Christian	428503004	2692578012	C57
	Pentecostalist SYN Pentacostal Christian	160562005	250291014	C58
	Presbyterian	160560002	250287016	C59
	Protestant	309885004	453388014	C60
	Plymouth Brethren	344261000000105	642861000000113	C61
	Quaker	309886003	453389018	C62
	Rastafari	248544006	680301000000114	C63
	Reformed Christian	368251000000105	713951000000110	C64
	Reformed Presbyterian	368261000000108	713981000000116	C65
	Reformed Protestant	368271000000101	714011000000114	C66
	Roman Catholic	160540005	250259013	C67
	Romanian Orthodox	368281000000104	714041000000110	C68
	Russian Orthodox	429544005	2694490013	C69
	Salvation Army Member	160234004	249672018	C70
	Scottish Episcopalian	371351000000101	729261000000110	C71
	Serbian Orthodox	344321000000109	643011000000114	C72
	Seventh Day Adventist	428821008	2692183014	C73
	Syrian Orthodox	368301000000103	714111000000110	C74
	Ukrainian Catholic	368311000000101	714141000000111	C75
	Ukrainian Orthodox	373901000000100	735001000000115	C76
	Uniate Catholic	491801000000107	1058761000000113	C77
	Unitarian	429708003	2693950012	C78
	United Reformed	344361000000101	643101000000113	C79
	Zwinglian	368321000000107	714171000000117	C80
HINDU	Hindu	160545000	250268010	D1
	Advaitin Hindu	427963008	2694381019	D2
	Arya Samaj Hindu	428347009	2692541014	D3

SCG Guidance: How to Use the Religious or Other Belief System Affiliation List

NPFIT-FNT-TO- SCG-0057.05

08/04/2009 / Approved / v1.0

	Shakti Hindu	428410008	2692957017	D4
	Shiva Hindu	429379008	2694241011	D5
	Vaishnava Hindu Hare Krishna	429511004	2692313014 714511000000116	D6
JEWISH	Jewish	160543007	250265013	F1
	Ashkenazi Jew	81706006	135537015	F2
	Haredi Jew	427950002	2693198016	F3
	Hasidic Jew	360984002	477048013	F4
	Liberal Jew	427754003	2695096016	F5
	Masorti Jew	429534008	2694716017	F6
	Orthodox Jew	429644000	2695980016	F7
	Reform Jew	429509008	2696089014	F8
MUSLIM	Muslim	309884000	453387016	G1
	Ahmadi	428815009	2694951017	G2
	Druze	368361000000104	714321000000118	G3
	Ismaili Muslim	428801007	2693319019	G4
	Shi'ite Muslim	28010004	46891017	G5
	Sunni Muslim	64988008	499996010	G6
SIKH	Sikh	366740002	490271012	I1
DECLINES TO DISCLOSE	Religion not given - patient refused	312865007	456656019	M1
PAGAN	Pagan	205141000000101	314611000000118	H1
	Asatruar	367851000000107	712741000000115	H2
	Celtic Pagan	367881000000101	712831000000118	H3
	Druid	428506007	2694921011	H4
	Goddess	344091000000105	712651000000114	H5
	Heathen	304041000000105	540101000000111	H6
	Occultist	367951000000102	713041000000113	H7
	Shaman	344111000000100	713111000000113	H8
	Wiccan	428408006	2692283017	H9
BAHA'I	Baha'i	429732005	2691909013	A1
JAIN	Jain	429787006	2695820017	E1
ZOROASTRIAN	Zoroastrian	429790000	2694817017	J1

Appendix 5 Top Ten Most Common Religious Affiliations

1. Christian
 - a. Church of England
 - b. Roman Catholic
 - c. Jehovah's Witness
 - d. Methodist/Free Church
 - e. Pentecostal

2. Muslim
 - a. Shia
 - b. Sunni

3. Jewish

4. Hindu

5. Sikh

6. Buddhist

7. Pagan

8. Humanist

9. Baha'i

10. Spiritual, not religious