

CliniClue Xplore Browser Installation

Table of Contents

INTRODUCTION 3

INSTALLING CLINICLUE XPLORE 4

GETTING A LICENSE FOR CLINICLUE XPLORE 9

INSTALLING THE SNOMED CT DATA 13

 USING THE ONLINE INSTALLATION..... 13

 DOWNLOADING THE DATA FILES MANUALLY 16

UPDATING SNOMED CT DATA 24

 USING THE ONLINE UPDATES 24

 UPDATE THE DATA FILES MANUALLY 26

UPDATING THE BROWSER SOFTWARE 31

 USING THE ONLINE UPDATES 31

 UPDATE MANUALLY USING DOWNLOADED FILES 32

Introduction

There are a number of browsers available which allow users to view SNOMED CT content without the need of a clinical application. This guide covers the installation of the CliniClue Xplore browser and how to update the data when new versions of SNOMED CT are released.

A new version of the UK Edition of SNOMED CT is released every 6 months; this is in April and October each year. You are advised to obtain a new version of the SNOMED CT data when there is a new release to ensure you have the most up to date content.

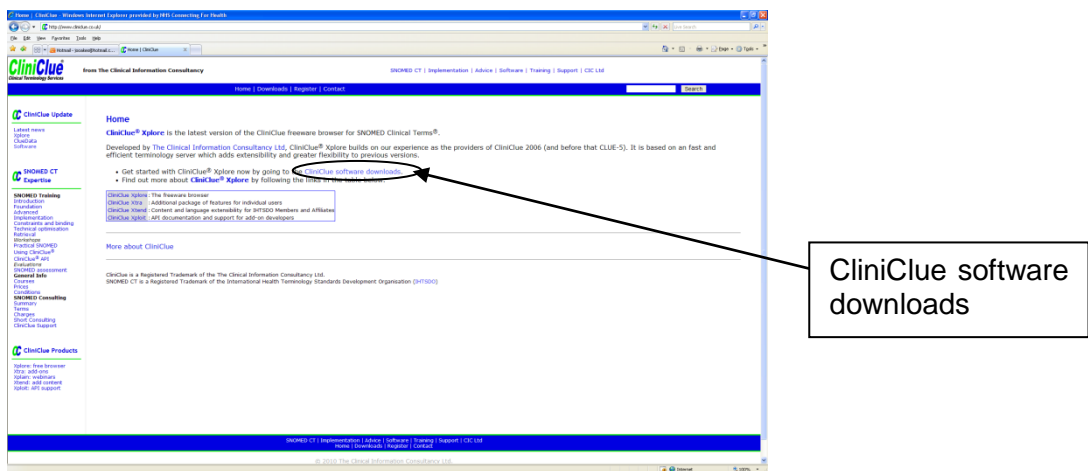
Installing CliniClue Xplore

Before you are able to view the SNOMED CT data you must install the CliniClue Xplore browser application that will enable you to view it. To install the browser carry out the following steps:

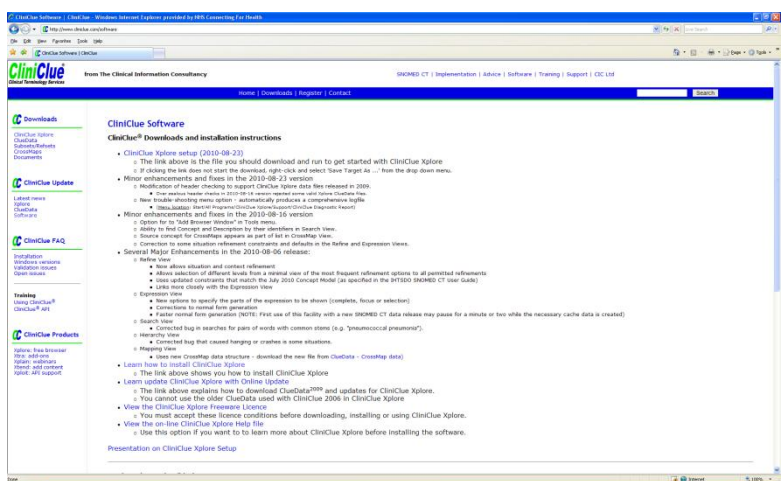
- Go to the CliniClue website which can be found at:

<http://www.cliniclue.co.uk/>

A screen similar to the following will appear:



CliniClue Xplore is the latest version of the CliniClue freeware browser for SNOMED CT. To download the latest version of the application click on the link **CliniClue software downloads** as shown above and a screen similar to the following will appear:



This screen contains the link to download the application, together with the latest information and links to help.

To install the application click on the link to download and run the installation as shown below:

CliniClue Software

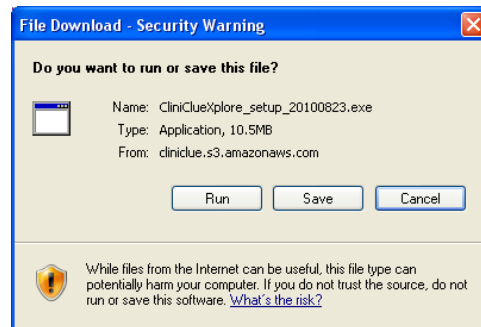
CliniClue® Downloads and installation instructions

- [CliniClue Xplore setup \(2010-08-23\)](#)

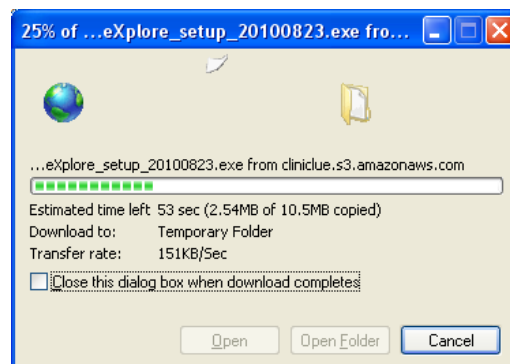
- The link above is the file you should download and run to get started with CliniClue Xplore
- If clicking the link does not start the download, right-click and select 'Save Target As ...' from the drop down menu.

Click on link to start installation

After clicking on the above link a screen similar to the following will appear:

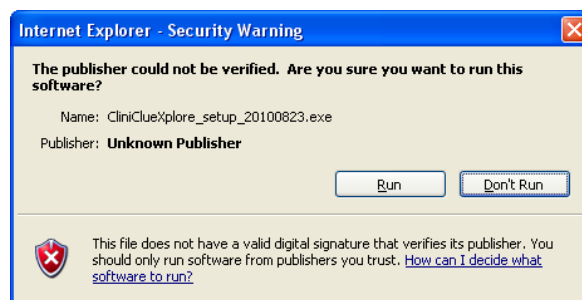


Click on the **Run** button to start the installation. This may take a few minutes but a screen similar to the following will appear showing you the progress:

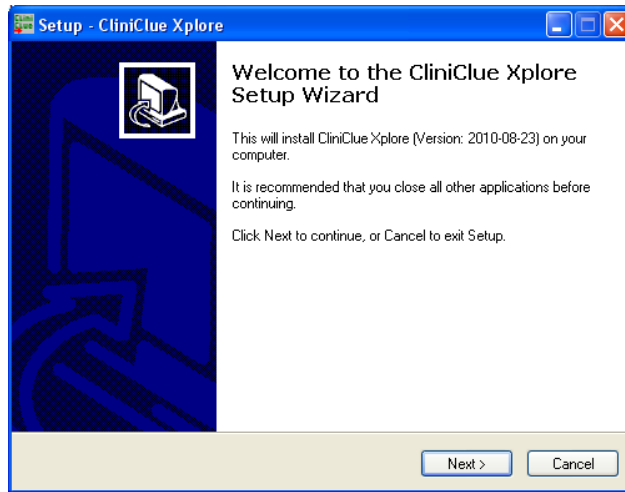


NOTE: You will need admin rights to your PC to install this product. If you do not have these, you will need to contact your IT support for assistance. If they install the product for you, please ensure they also download the data as well to complete the installation.

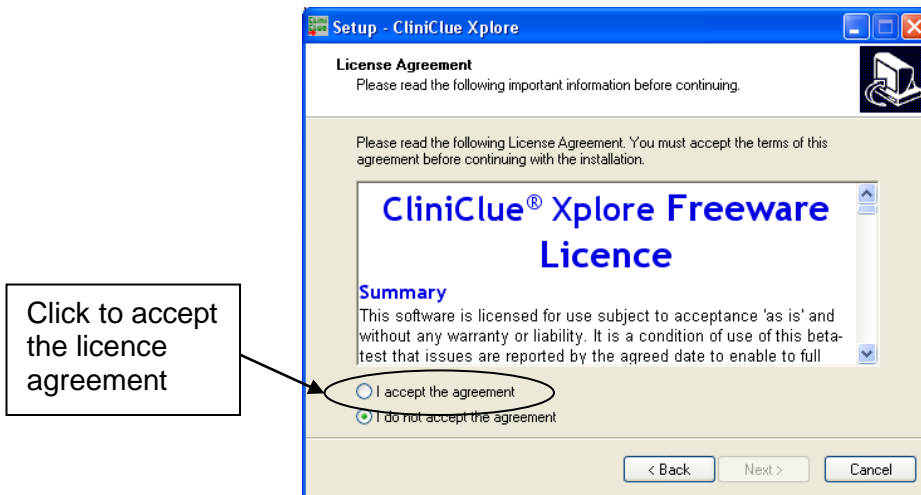
Once the above has finished, you may get a screen similar to the following:



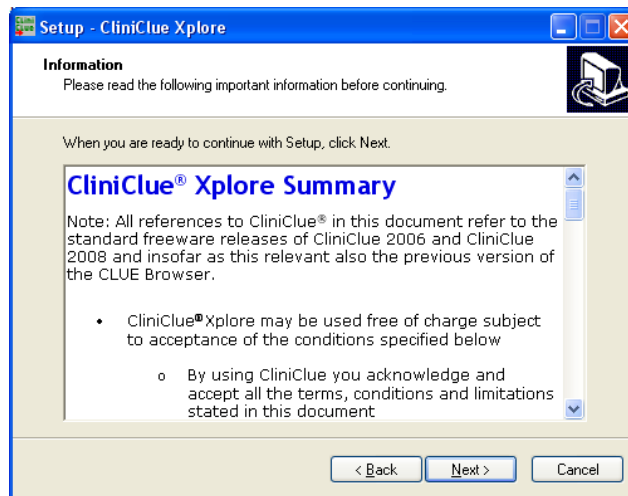
Click on the **Run** button to continue the installation (as the Publisher is known) and a screen similar to the following will appear.



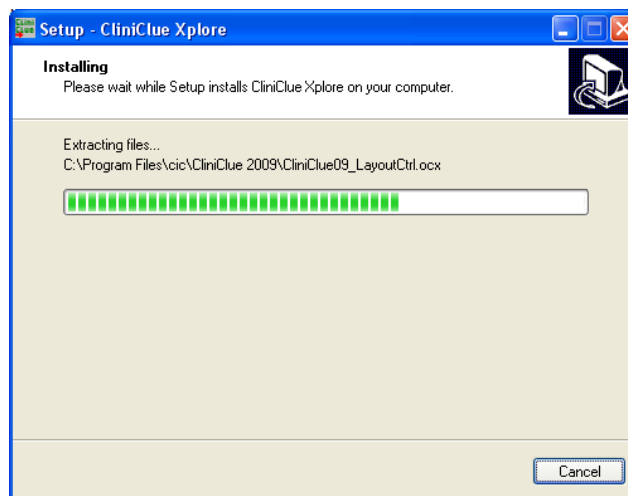
Click on the **Next** button to continue the installation and a screen similar to the following will appear.



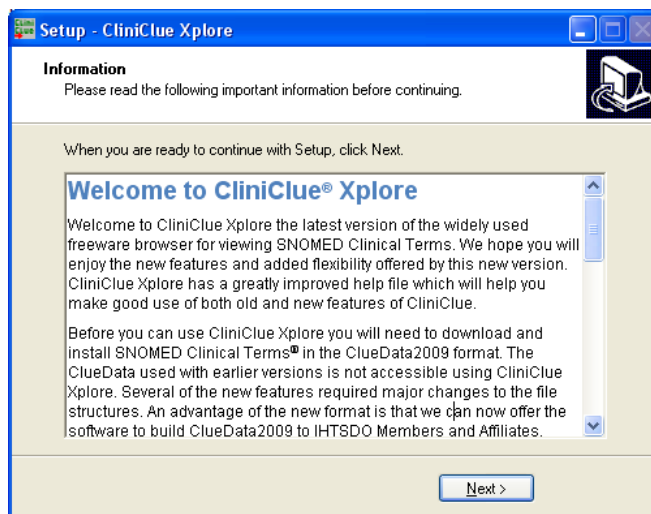
In order to continue with the installation you must accept the Licence Agreement as show above. Once you have clicked to accept this the **Next** button will be made available for you to click on. Click the **Next** button and a screen similar to the following will appear:



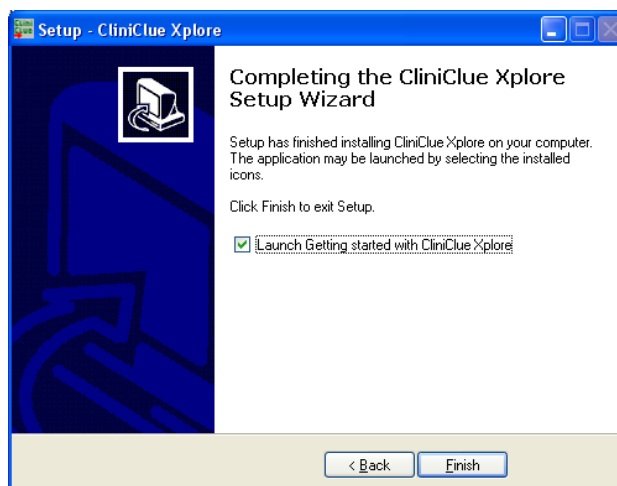
Once you have read the information click on the **Next** button to continue with the installation and a screen similar to the following will appear with a progress bar.



Once the above has completed a screen similar to the following will appear:



Once you have read the information click on the **Next** button to continue with the installation and a screen similar to the following will appear:



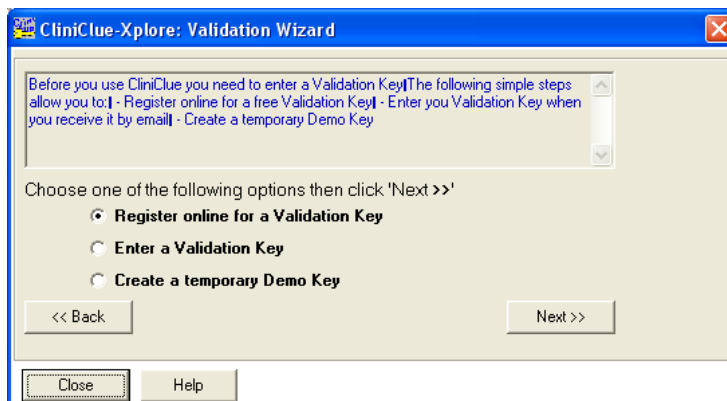
If you wish to view the **Getting started with CliniClue Xplore** then leave the tick in the box. To follow the rest of these instructions click to remove the tick and then click on the **Finish** button to complete the installation.

This will return you to your original screen on the website.

At this point you have installed the software but this will not work without a license and the SNOMED CT data which need to be installed.

Getting a License for CliniClue Xplore

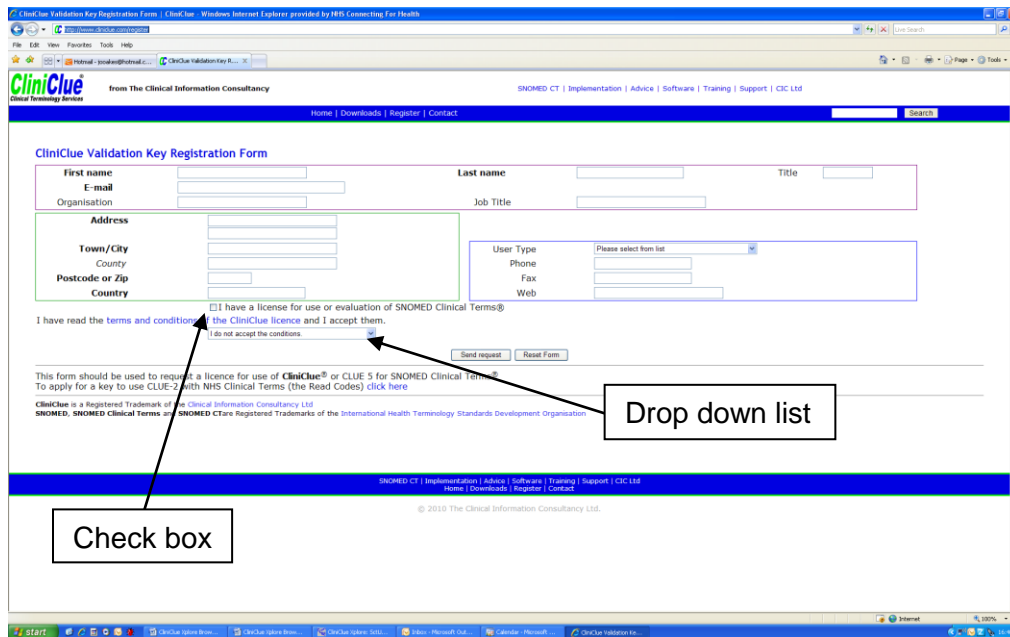
Once the application has been installed and you start it up a screen similar to the following will appear:



At this point you can do one of three things:

- **Register online for a Validation Key** – this will provide you with a validation key to enter and use the product.
- **Enter a Validation Key** – if you already have a validation key then this option allows you to enter it and use the application.
- **Create a temporary Demo Key** – this option will allow you to use the application by entering a temporary validation key, however, this is only temporary so we recommend that you select the first option to get a permanent validation key.

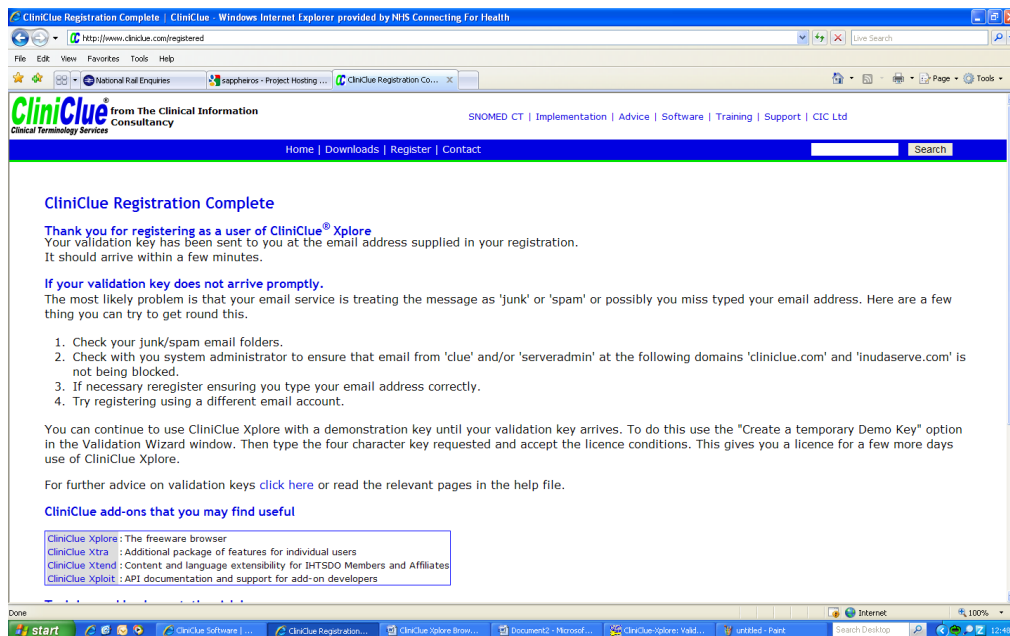
For the purposes of this guide we will be requesting a permanent validation key so will select the first option **Register online for a Validation Key**. Make sure this option is selected and click on the **Next** button and a screen similar to the following will appear:



Complete all of the details on the screen. Choose **“I have read and accept the conditions noted above”** from the drop down list, and ensure the check box next to **“I have a license for use or evaluation of SNOMED Clinical Terms”** is checked, provided you qualify for this. If you are unsure please visit the SNOMED CT website to learn more about SNOMED CT licensing:

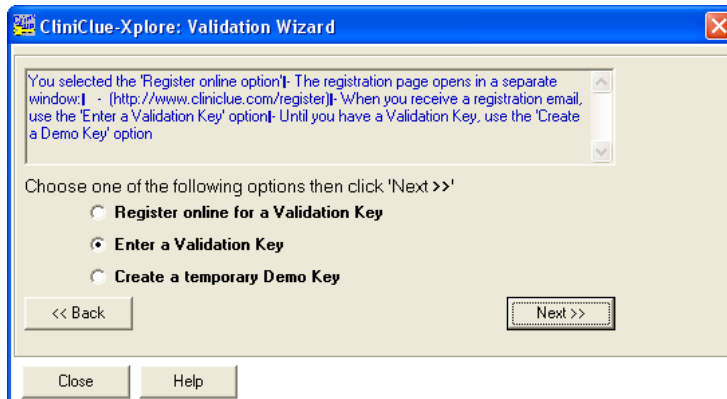
<http://www.connectingforhealth.nhs.uk/snomed/licensing>

Once everything has been completed click on the **Send Request** button and a screen similar to the following will appear:

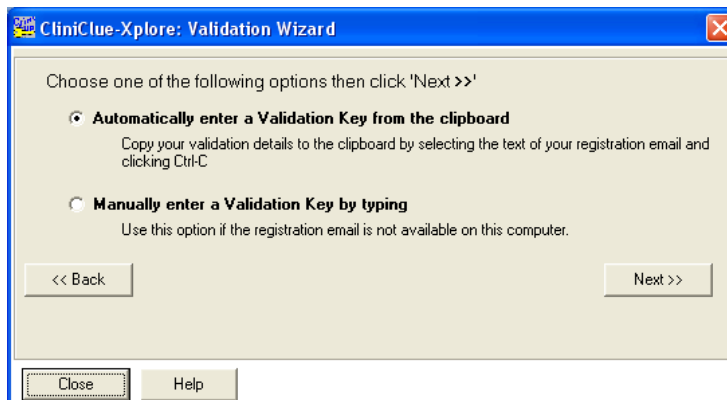


Your request will be dealt with and you will receive an email with your login details and validation key almost instantly.

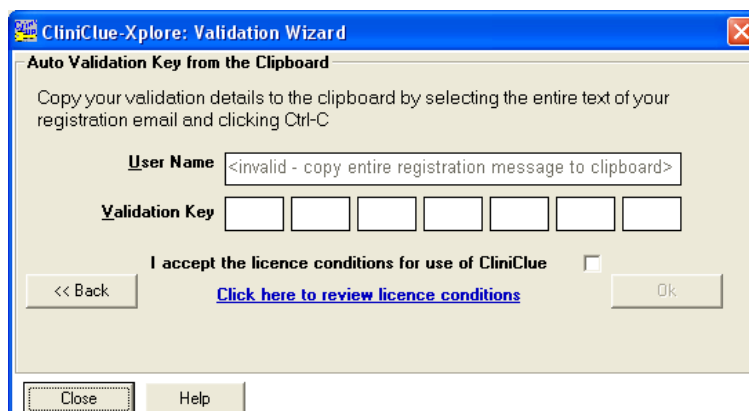
When you return to the CliniClue Xplore application a screen similar to the following should appear:



In this case the second option should already be selected ready for you to enter your Validation Key. Click on the **Next** button and a screen similar to the following will appear:

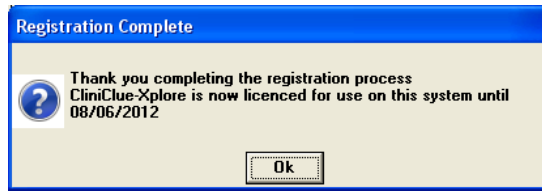


At this point you can enter your Validation Key manually or from the clipboard. In this guide we are going to select the first option to enter our Validation Key automatically. Click on the **Next** button to continue and a screen similar to the following will appear:



At this point return to the email and copy the entire contents of the email by selecting it all and pressing **Ctrl + C**. When you close the email and return to the above screen it should be completed with all your details. Click on the

option **I accept the licence conditions for use of CliniClue** and then click on the **OK** button. A screen similar to the following will appear:



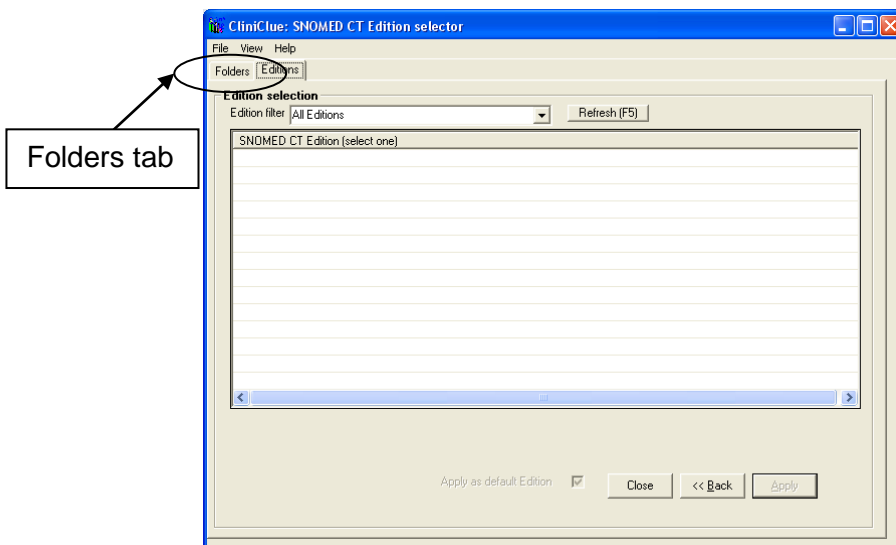
Click on the **OK** button to continue with the installation of the data.

Installing the SNOMED CT Data

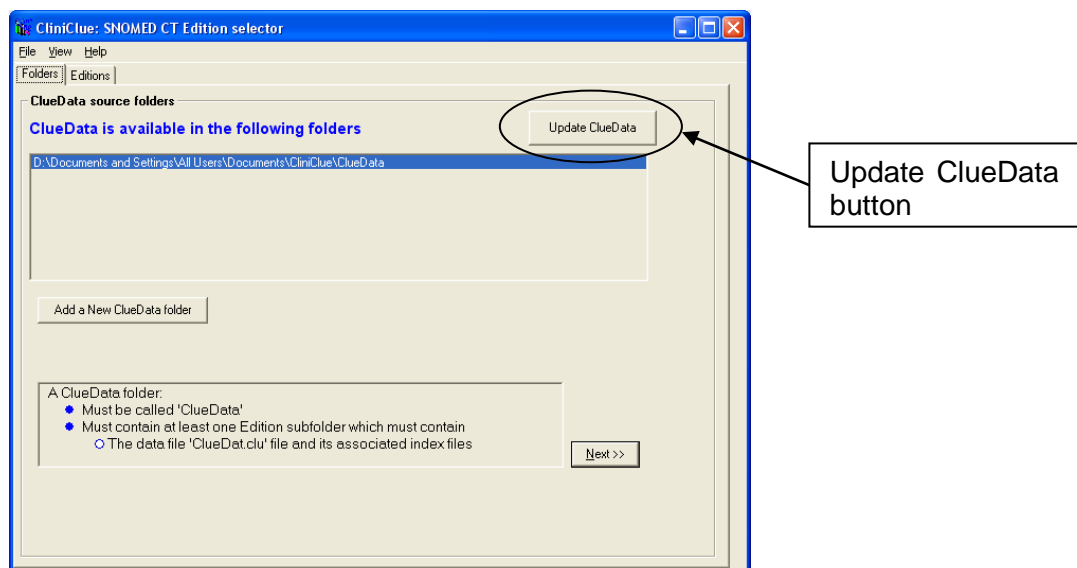
You will need to install SNOMED CT data in order to use the CliniClue Xplore browser. The browser will work with the international edition, however, it will not include content specific to the UK so we recommend you install the UK data as well.

Using the Online Installation

Once you have completed the validation as described previously a screen similar to the following will appear:



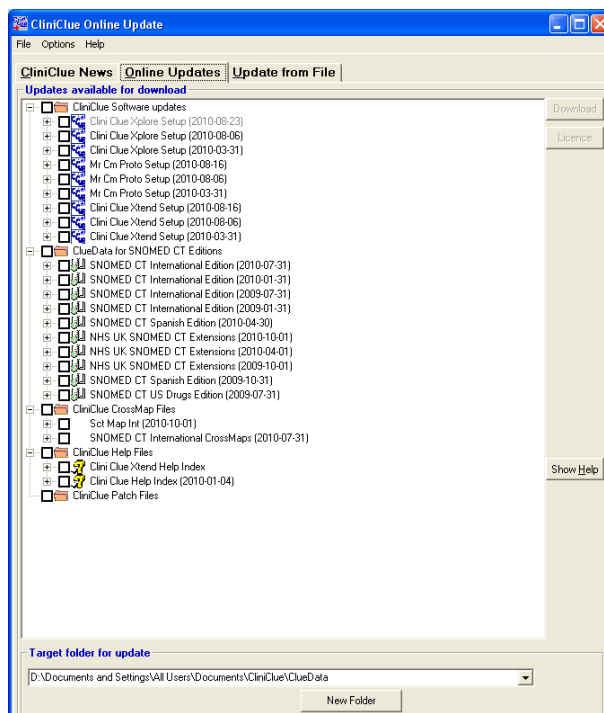
If this is your initial installation, the screen will be empty and you need to download the SNOMED CT data. In order to do this you must move to the folders tab of the above window. When you click on the folders tab a screen similar to the following will appear:



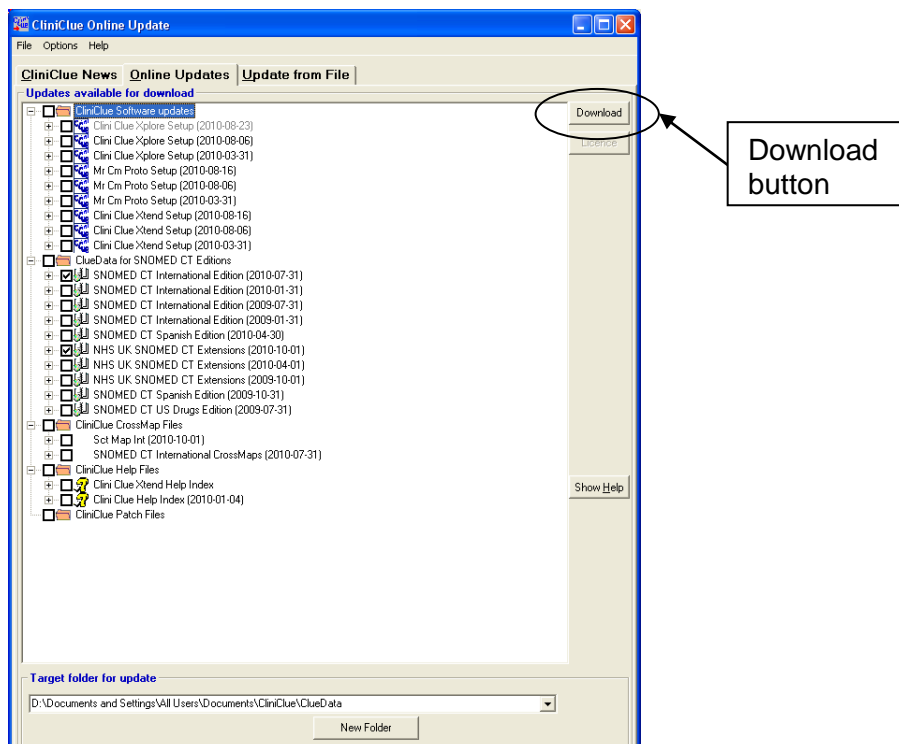
Click on the **Update ClueData** button and a screen similar to the following will appear:



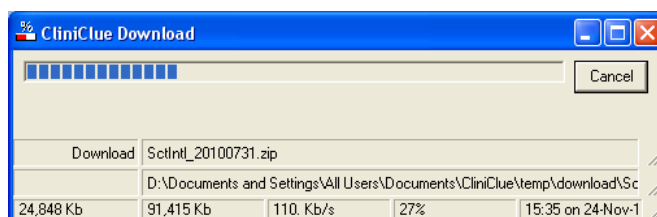
The above screen gives details of the latest updates for CliniClue Xplore. In this instance we are interested in the **Online Updates** which is the easiest way to install your data. Click on the **Online Updates** tab at the top of the window and a screen similar to the following will appear:



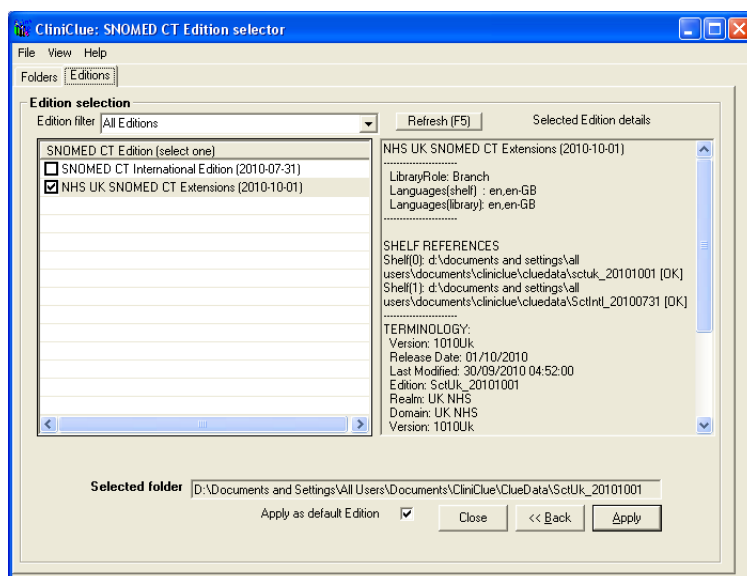
The above lists all the available updates. In this instance we are only interested in the **NHS UK SNOMED CT Extensions** however the International Edition also needs to be installed. They are listed in date order with the latest version first. In the example below the **NHS UK SNOMED CT Extensions (2010-10-01)** has been selected by clicking in the check box next to it and when you do that the corresponding International Edition is automatically selected.



Once the relevant data has been selected click on the **Download** button to start the download. This may take several minutes as the file is fairly large. A screen similar to the following will appear and show the progress of the download:

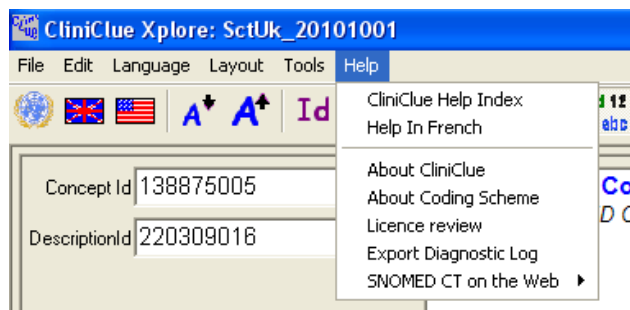


Once the download has completed click on the **OK** button to continue into the application, a screen similar to the following will appear:



Ensure there is a tick next to **NHS UK SNOMED CT Extensions** and then click on the **Apply** button in the bottom right of the screen. This will start the browser using the UK Edition of SNOMED CT.

For help on how to use the browser please refer to the help within the browser. This can be accessed by clicking on **Help** from the menu at the top of the screen.

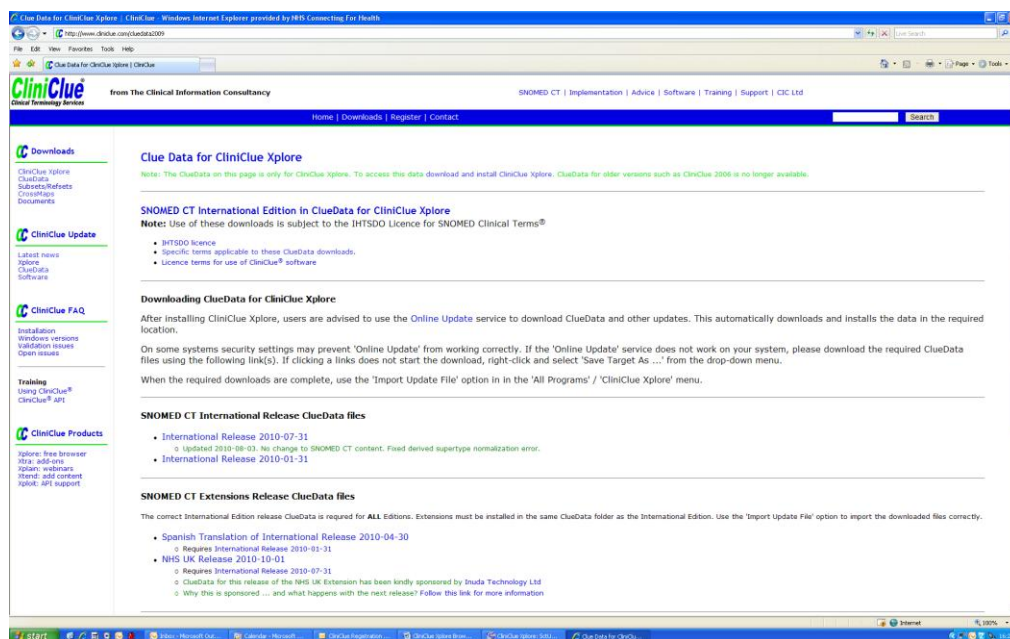


Downloading the Data Files Manually

In some instances it may not be possible to use the online facility to update the SNOMED CT data due to security or firewalls. In these cases it is possible to download the files and import them into CliniClue Xplore. To download the latest files go to:

<http://www.cliniclue.com/cluedata2009>

A screen similar to the following will appear:



CliniClue Xplore requires both the international and UK data files, so both of these will need to be downloaded.

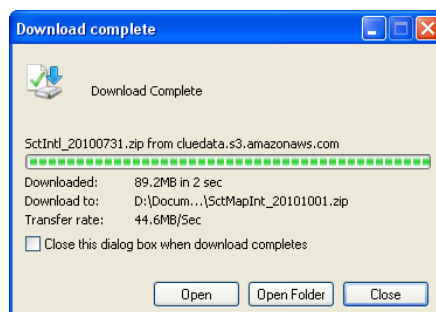
To download the latest international release files right click on the link and select **Save Target As**. Save the files in a directory that you will use later, e.g. "Data for CliniClue".

SNOMED CT International Release ClueData files

- [International Release 2010-07-31](#)
 - Updated 2010-08-03. No change to SNOMED CT content. Fixed derived supertype normalization error.
- [International Release 2010-01-31](#)

The release files are listed with the latest at the top so in the above example you would right click on **International Release 2010-07-31** to start saving the file. Please note this may take some time as the file is quite large.

When completed a screen similar to the following will appear:



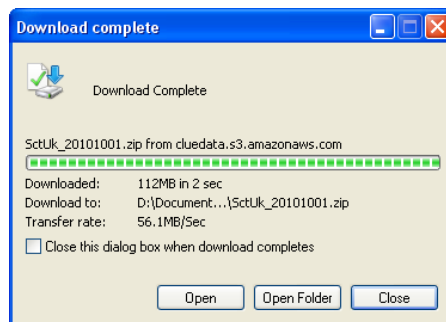
Click on the **Close** button to complete this process.

Repeat this process for the NHS UK Release files To download the latest UK release files right click on the link and select **Save Target As**.

- [NHS UK Release 2010-10-01](#)
 - Requires [International Release 2010-07-31](#)
 - ClueData for this release of the NHS UK Extension has been kindly sponsored by [Inuda Technology Ltd](#)
 - [Why this is sponsored ... and what happens with the next release? Follow this link for more information](#)

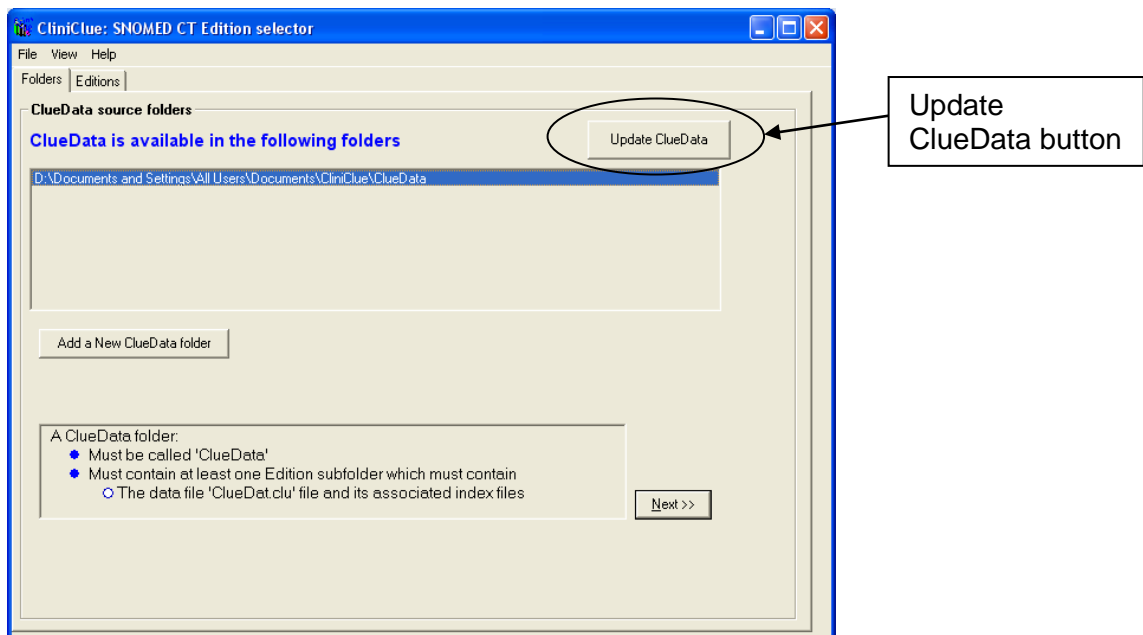
The release files are listed with the latest at the top so in the above example you would right click on **NHS UK Release 2010-10-01** to start saving the file. Please note this may take some time as the file is quite large.

When completed a screen similar to the following will appear:

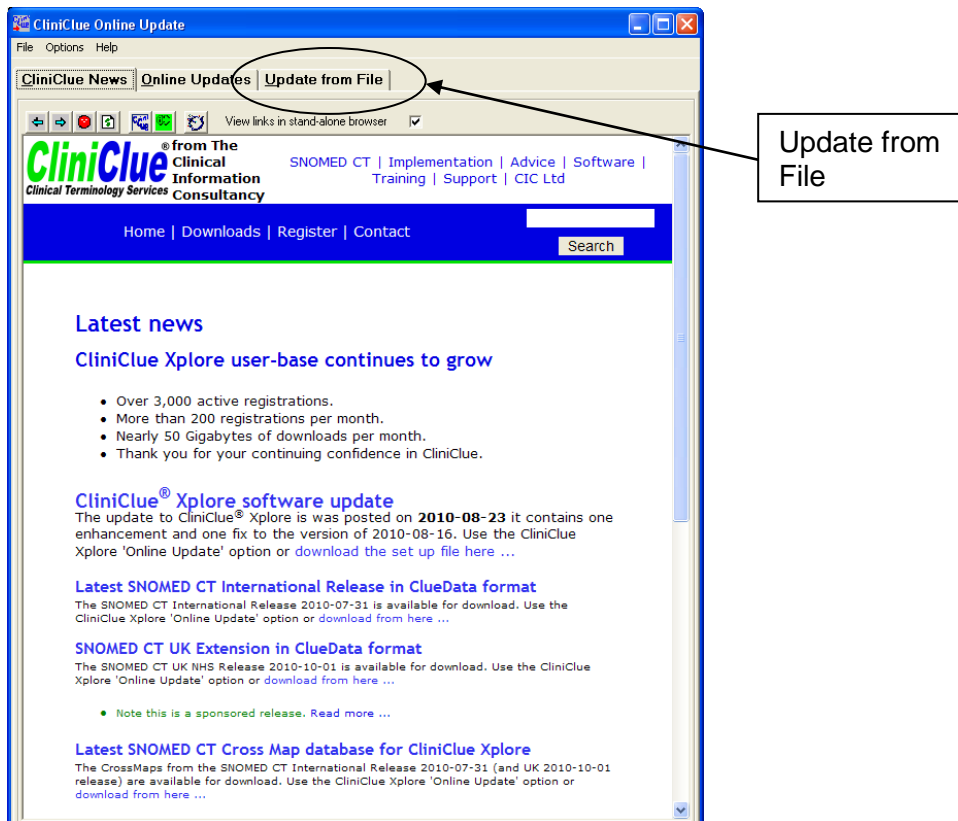


As before, click on the **Close** button to complete the process.

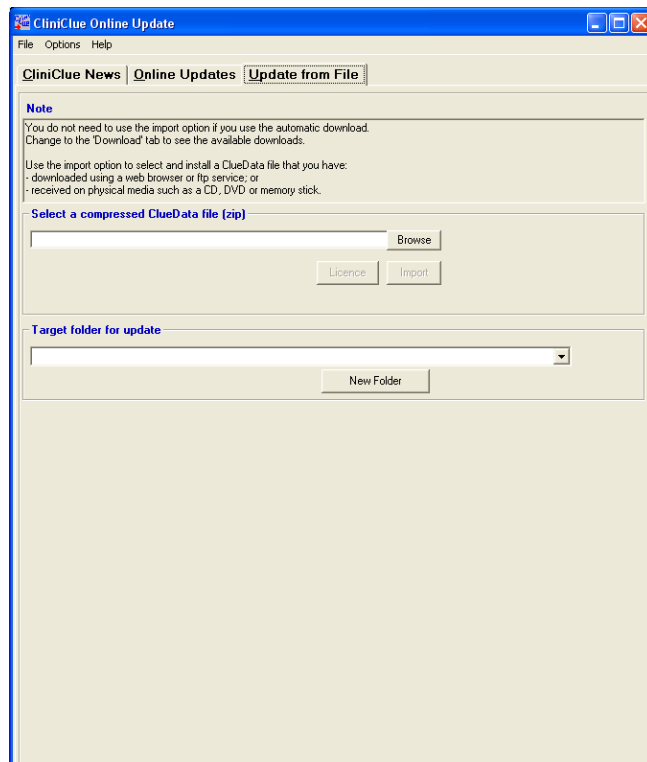
Once both sets of files have been downloaded, start up CliniClue Xplore and a screen similar to the following will appear:



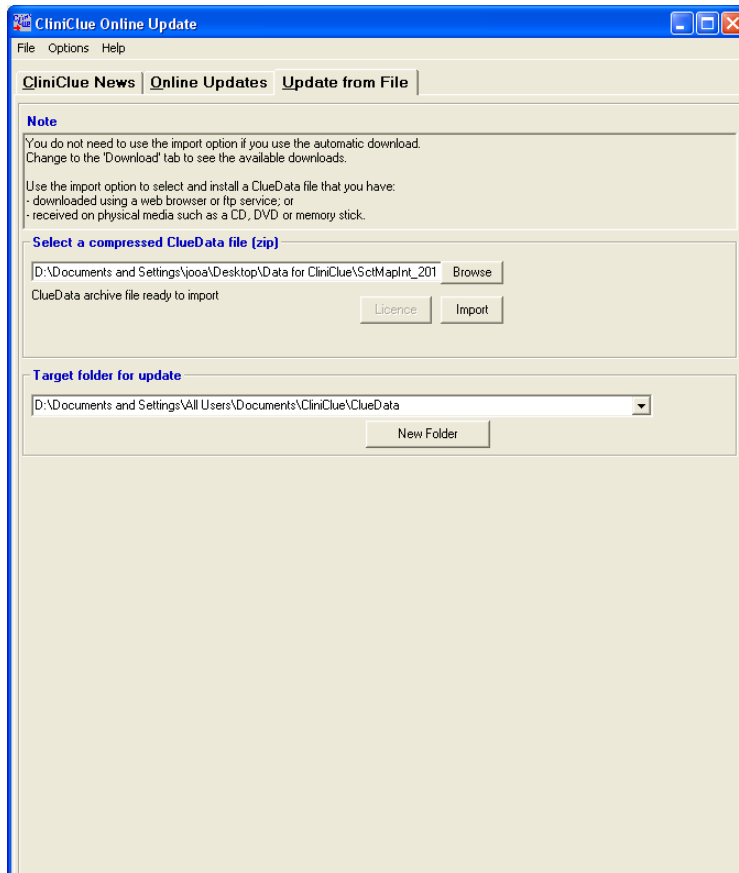
Click on the **Update ClueData** button and a screen similar to the following will appear:



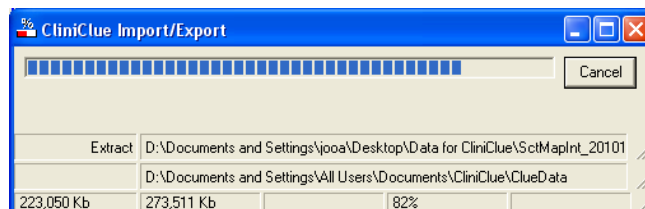
Click on the **Update from File** tab and a screen similar to the following will appear:



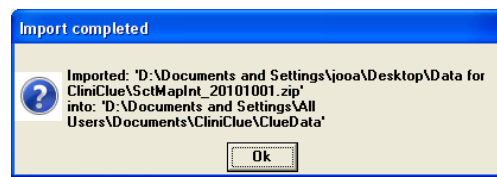
Click on the **Browse** button and locate the directory where you extracted the files to (the suggested one above was “Data for CliniClue”). You will see both the International and UK files that you downloaded. You will need to download each one separately. You will also need to select the **Target folder for update** from the drop down list. Unless there is a special reason, select the default one offered. When completed your screen will appear similar to the following:



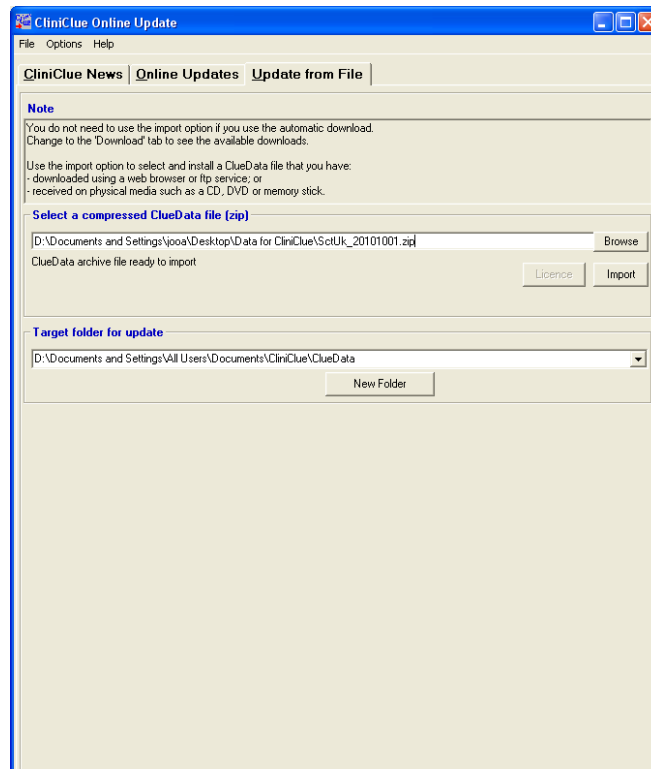
Once you have selected the first file using the **Browse** button click on the **Import** button to import the file into CliniClue Xplore. This may take some time as the file is quite large. The progress can be monitored as a screen similar to the following will appear:



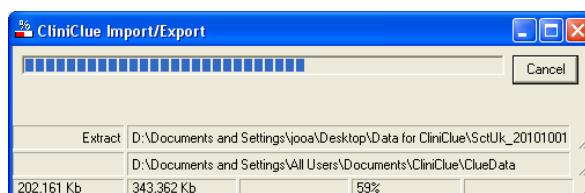
Once the import is complete a screen similar to the following will appear:



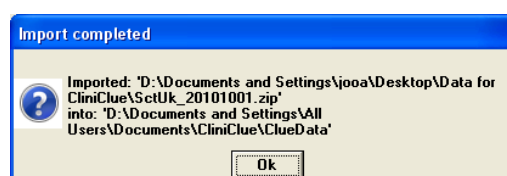
Click on **OK** and you will return to the following screen where you can then browse for the second file to be downloaded. Remember you will need to download both the International and UK files.



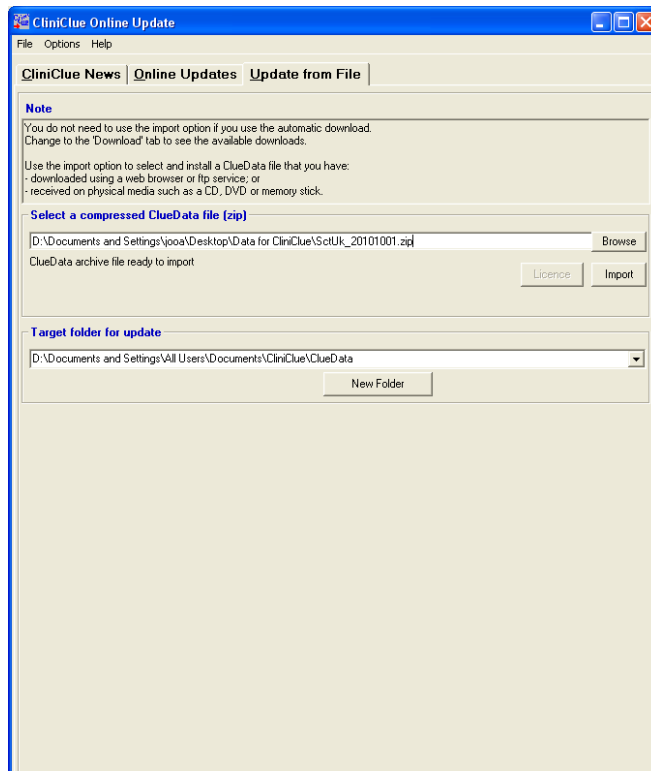
Once you have selected the second file using the **Browse** button click on the **Import** button to import the file into CliniClue Xplore. This may take some time as the file is quite large. The progress can be monitored as a screen similar to the following will appear:



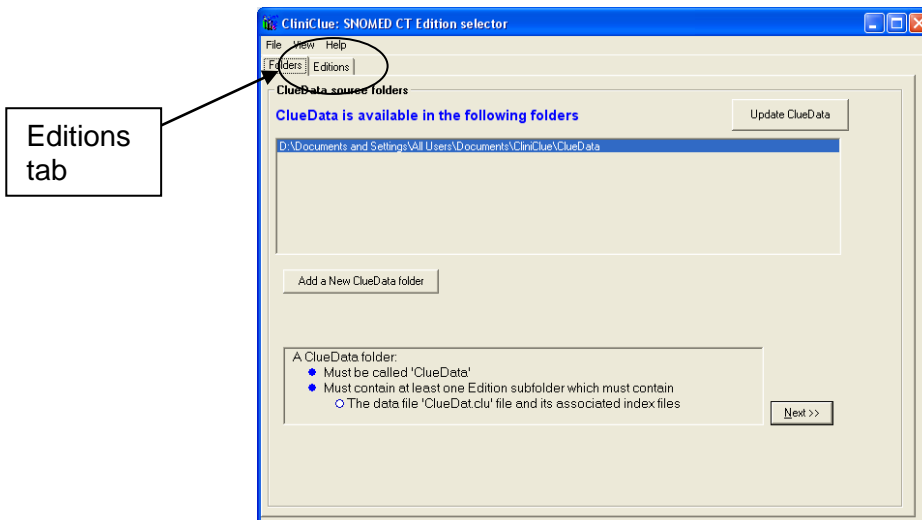
Once the import is complete a screen similar to the following will appear:



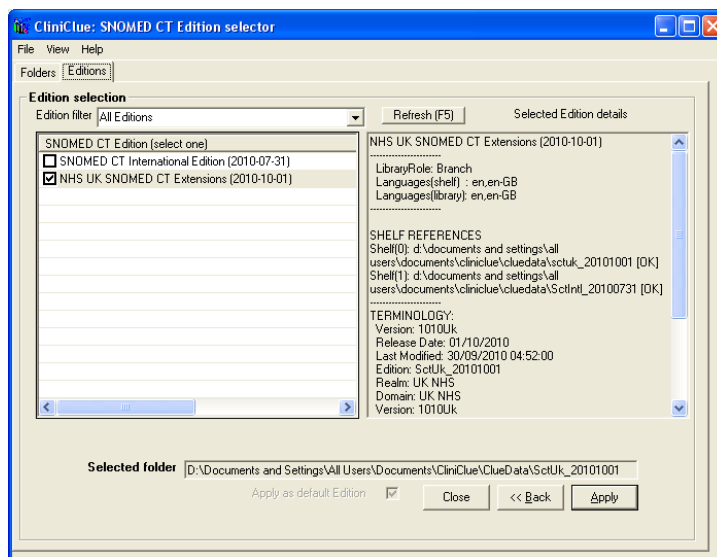
Click on **OK** and you will return to the following screen:



Once both files have successfully been imported you can close this screen and you will return to a screen similar to the following:

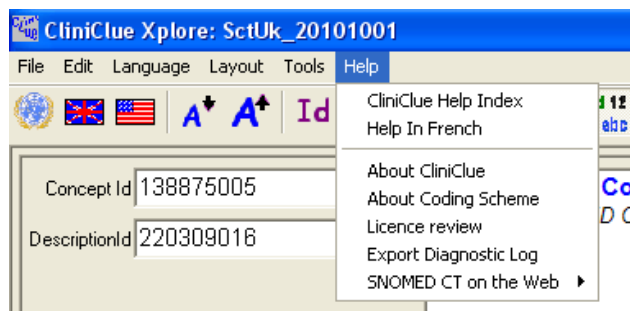


Click on the **Editions** tab and a screen similar to the following will appear:



Ensure there is a tick next to **NHS UK SNOMED CT Extensions** and then click on the **Apply** button in the bottom right of the screen. This will start the browser using the UK Edition of SNOMED CT.

For help on how to use the browser please refer to the help within the browser. This can be accessed by clicking on **Help** from the menu at the top of the screen.



Updating SNOMED CT Data

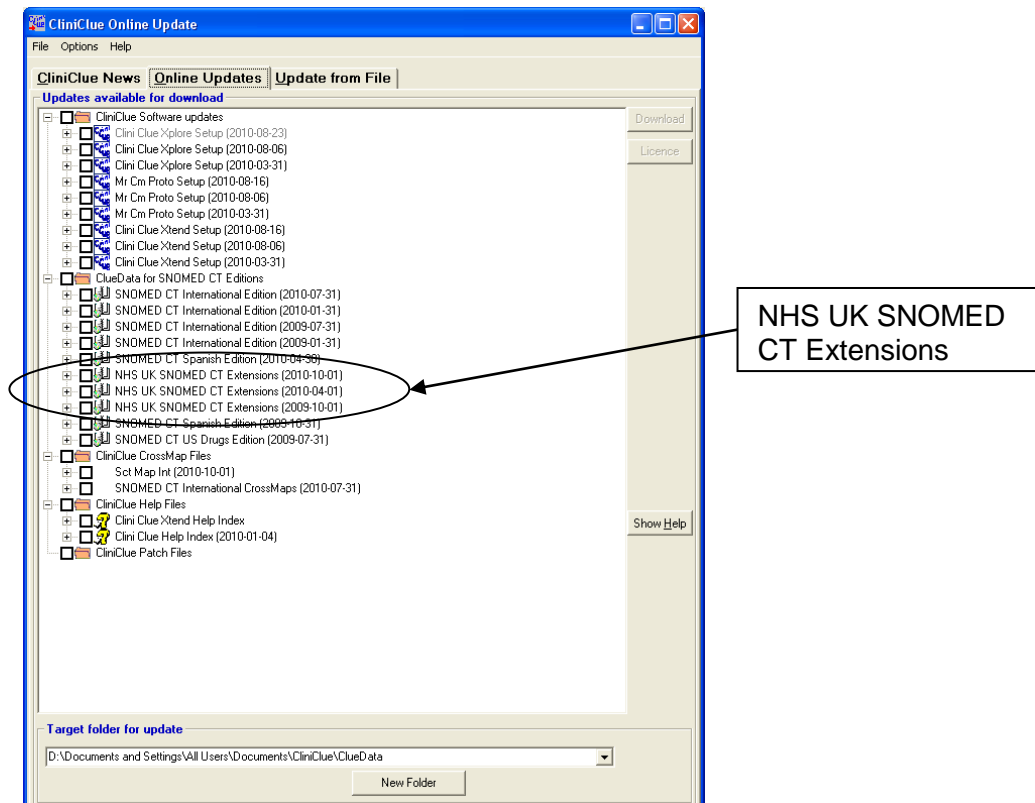
As SNOMED CT gets updated every six months in the UK it will be necessary to update the SNOMED CT data within the CliniClue Xplore browser. The easiest way to do this is to use the online update facility within the browser.

Using the Online Updates

From within CliniClue Xplore select **File, CliniClue Online Update** from the menu and a screen similar to the following will appear:

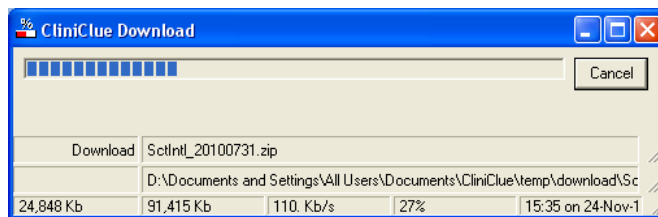


This screen gives you the latest news on CliniClue Xplore. To install the latest version of SNOMED CT move to the **Online Updates** tab as indicated. When you click on it the screen will change to one similar to the following:

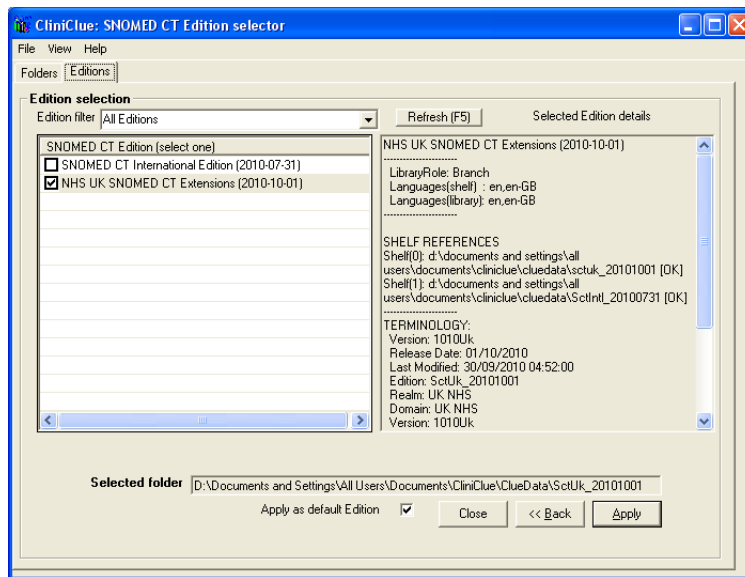


The above lists all the available updates. As discussed before we are only interested in the **NHS UK SNOMED CT Extensions** but the International Edition will also need downloading. They are listed in date order with the latest version first. Select the latest **NHS UK SNOMED CT Extensions** by clicking in the check box next to and the relevant International Edition will automatically be selected. Click on the **Download** button which will become available once something is selected.

Once the **Download** button has been clicked the files will start to download, this may take several minutes as the files are fairly large. A screen similar to the following will appear and show the progress of the download:



Once the download has completed click on the **OK** button to return to the application, a screen similar to the following will appear:



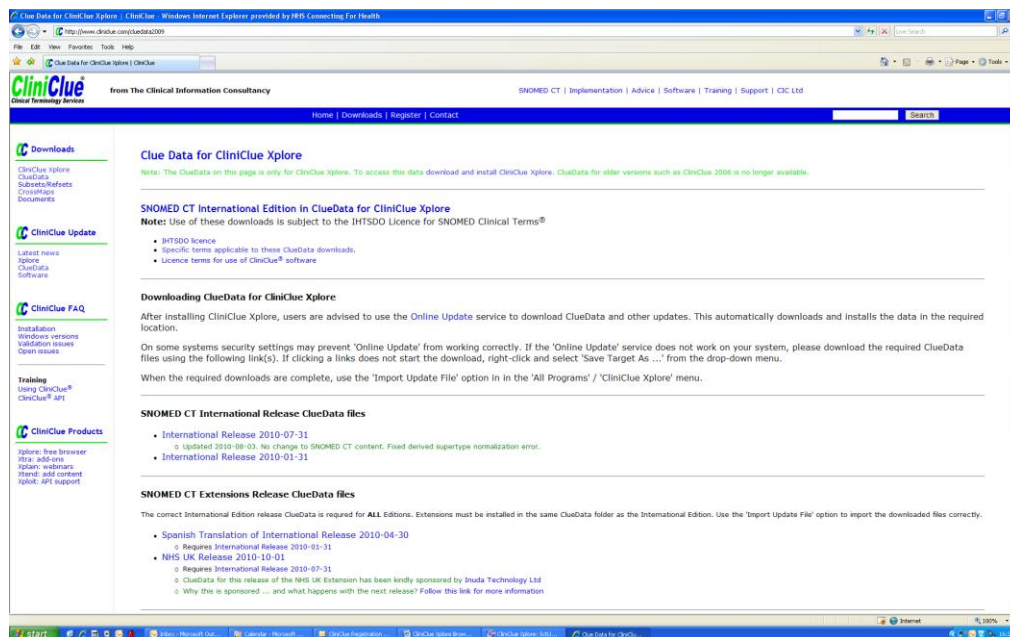
Ensure there is a tick next to the latest **NHS UK SNOMED CT Extensions** and then click on the **Apply** button in the bottom right of the screen. This will return to the browser using the latest UK Edition of SNOMED CT.

Update the Data Files Manually

In some instances it may not be possible to use the online facility to update the SNOMED CT data due to security or firewalls. In these cases it is possible to download the files and import them into CliniClue Xplore. To download the latest files go to:

<http://www.cliniclue.com/cluedata2009>

A screen similar to the following will appear:



CliniClue Xplore requires both the international and UK data files, so both of these will need to be downloaded.

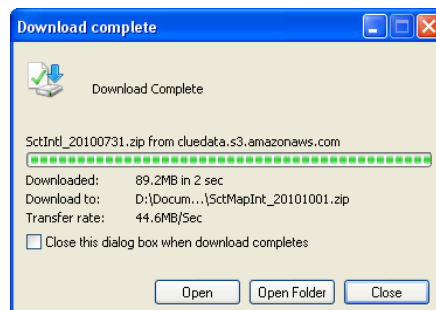
To download the latest international release files right click on the link and select **Save Target As**. Save the files in a directory that you will use later, e.g. "Data for CliniClue".

SNOMED CT International Release ClueData files

- [International Release 2010-07-31](#)
 - Updated 2010-08-03. No change to SNOMED CT content. Fixed derived supertype normalization error.
- [International Release 2010-01-31](#)

The release files are listed with the latest at the top so in the above example you would right click on **International Release 2010-07-31** to start saving the file. Please note this may take some time as the file is quite large.

When completed a screen similar to the following will appear:



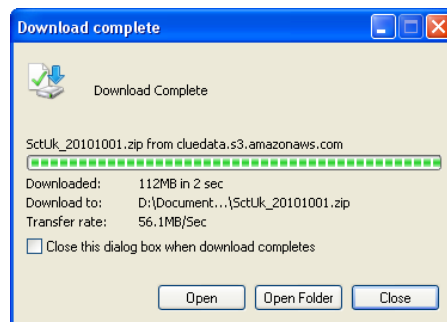
Click on the **Close** button to complete this process.

Repeat this process for the NHS UK Release files To download the latest UK release files right click on the link and select **Save Target As**.

- [NHS UK Release 2010-10-01](#)
 - Requires [International Release 2010-07-31](#)
 - [ClueData for this release of the NHS UK Extension has been kindly sponsored by Inuda Technology Ltd](#)
 - [Why this is sponsored ... and what happens with the next release? Follow this link for more information](#)

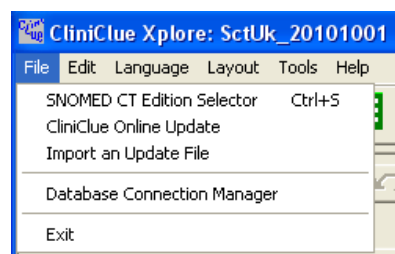
The release files are listed with the latest at the top so in the above example you would right click on **NHS UK Release 2010-10-01** to start saving the file. Please note this may take some time as the file is quite large.

When completed a screen similar to the following will appear:

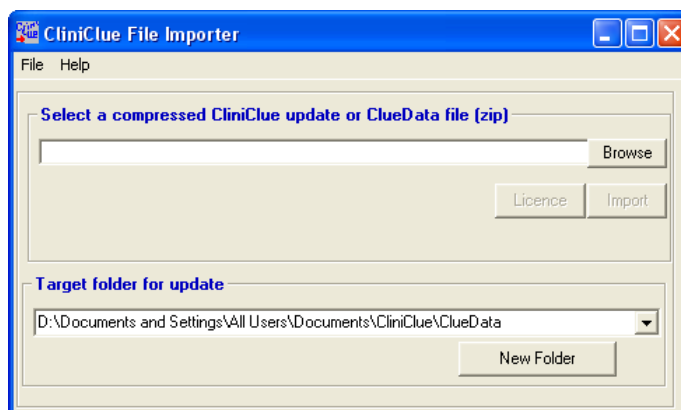


As before, click on the **Close** button to complete the process.

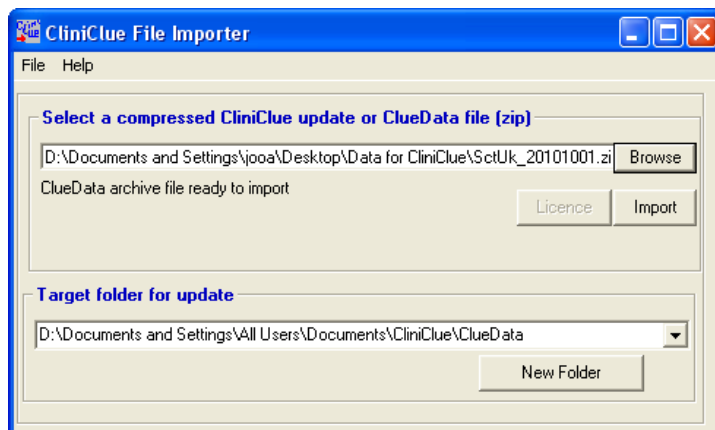
Once both sets of files have been downloaded, start up CliniClue Xplore. From the menu select **File, Import and Update File**.



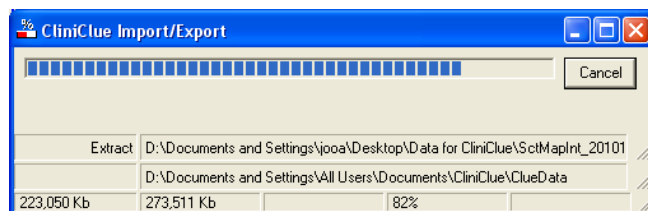
A screen similar to the following will appear:



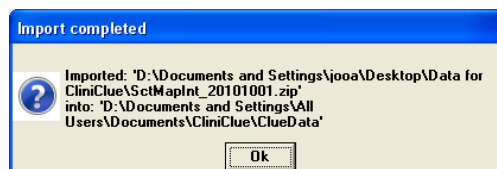
Click on the **Browse** button and locate the directory where you extracted the files to. You will see both the International and UK files that you downloaded. You will need to download each one separately. The **Target folder for update** will already be completed from your previous downloads. When completed your screen will appear similar to the following:



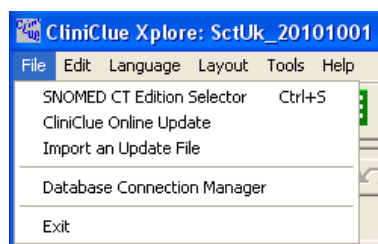
Once you have selected the first file using the **Browse** button click on the **Import** button to import the file into CliniClue Xplore. This may take some time as the file is quite large. The progress can be monitored as a screen similar to the following will appear:



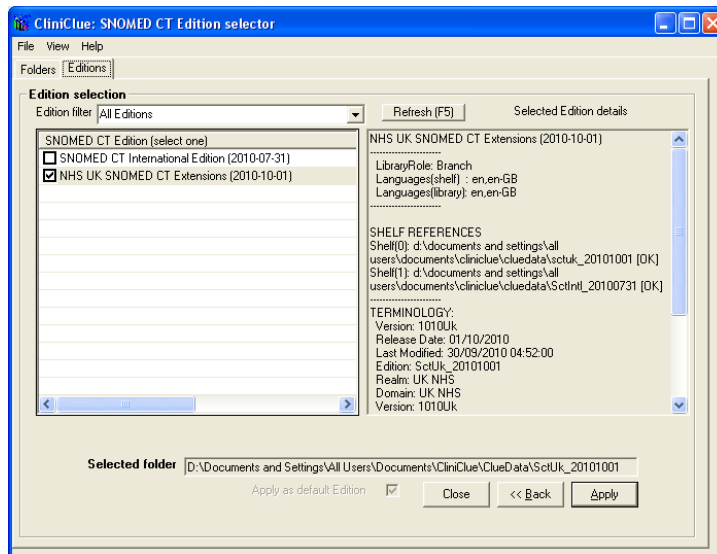
Once the import is complete a screen similar to the following will appear:



Import the second file in exactly the same way. Once both files have successfully been imported you will need to tell CliniClue Xplore to use the new data. From the menu select **File, SNOMED CT Edition Selector**.



A screen similar to the following will appear:



There will be several editions of SNOMED CT available, ensure there is a tick next to latest **NHS UK SNOMED CT Extensions** and then click on the **Apply** button in the bottom right of the screen. This will start the browser using the latest UK Edition of SNOMED CT.

Updating the Browser Software

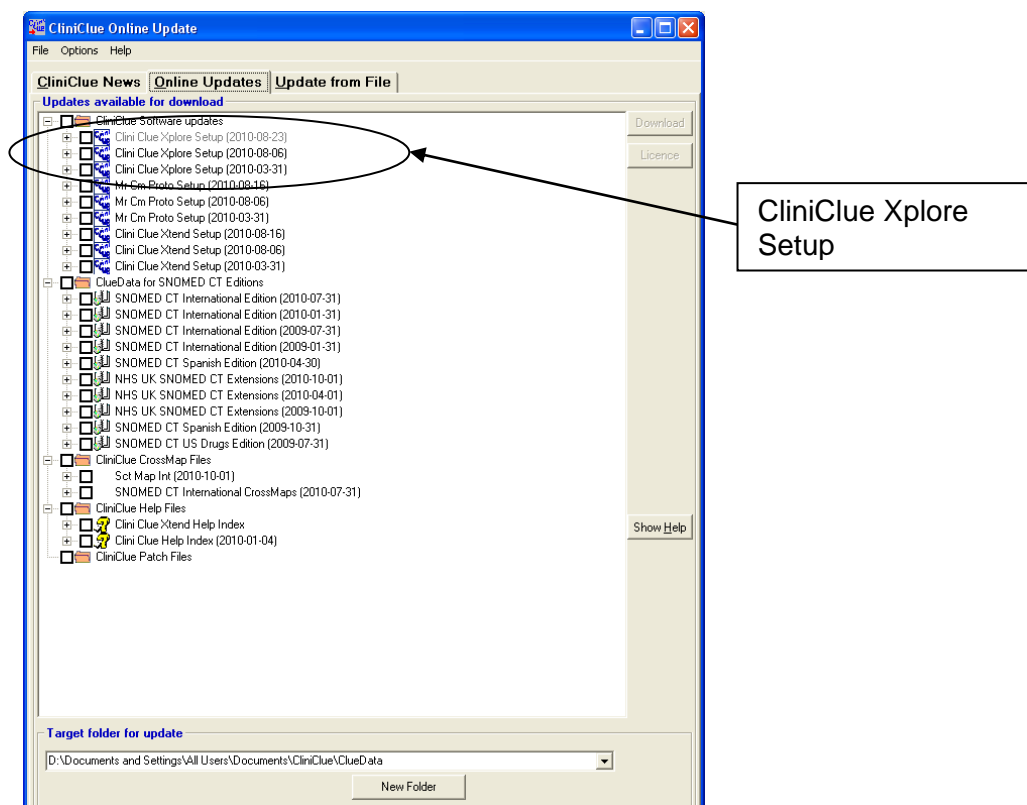
As well as updating the SNOMED CT data, it may also be necessary to update the actual CliniClue Xplore software. The easiest way to do this is to use the online update facility within the browser.

Using the Online Updates

From within CliniClue Xplore select **File, CliniClue Online Update** from the menu and a screen similar to the following will appear:



This screen gives you the latest news on CliniClue Xplore and will inform you if there are any new releases of the software. To install the latest version of the CliniClue Xplore software move to the **Online Updates** tab as indicated. When you click on it the screen will change to one similar to the following:



The above lists all the available updates. In this instance we are only interested in the **ClinicClue Xplore Setup**. They are listed in date order with the latest version first. Select the latest **ClinicClue Xplore Setup** by clicking in the check box next to it and then click on the **Download** button which will become available once something is selected.

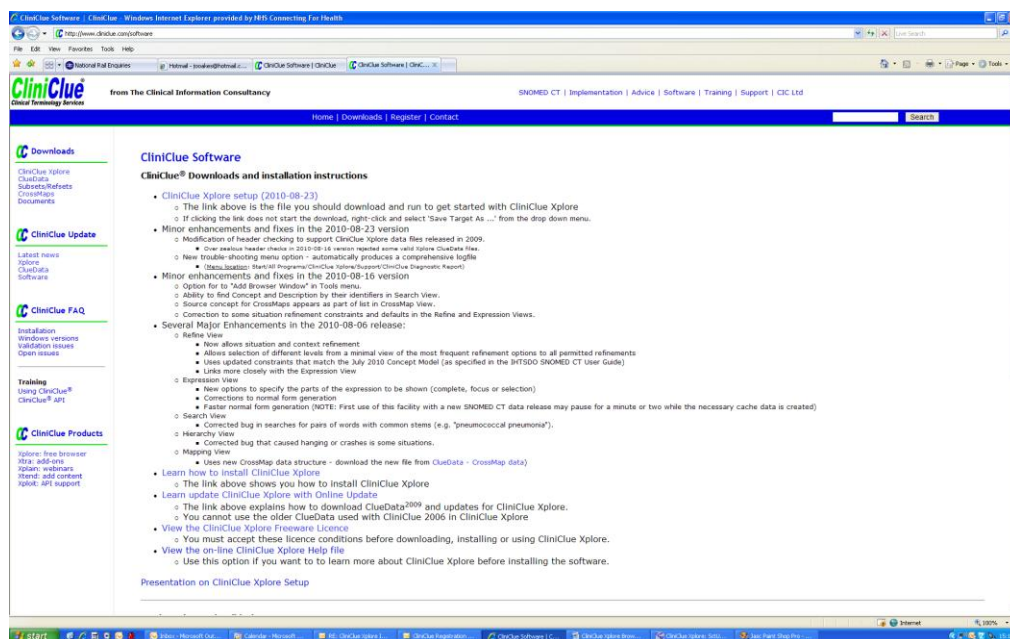
Follow the on screen prompts to install the latest version of the software.

Update Manually Using Downloaded Files

In some instances it may not be possible to use the online facility to update the SNOMED CT data due to security or firewalls. In these cases it is possible to download the files and import them into CliniClue Xplore. To download the latest files go to:

<http://www.cliniclue.com/software>

A screen similar to the following will appear:



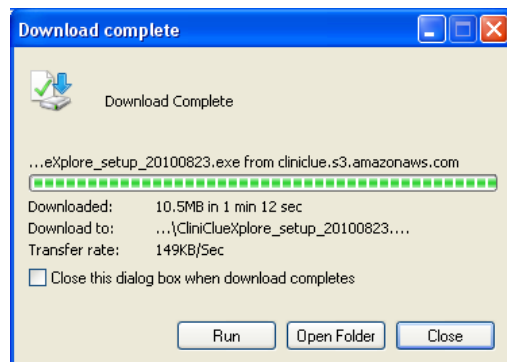
To download the latest version of the CliniClue Xplore software right click on the link and select **Save Target As**. Save the file in a directory that you will use later, e.g. "Data for CliniClue".

CliniClue Software

CliniClue® Downloads and installation instructions

- [CliniClue Xplore setup \(2010-08-23\)](#)
 - The link above is the file you should download and run to get started with CliniClue Xplore
 - If clicking the link does not start the download, right-click and select 'Save Target As ...' from the drop down menu.
- Minor enhancements and fixes in the 2010-08-23 version
 - Modification of header checking to support CliniClue Xplore data files released in 2009.
 - Over zealous header checks in 2010-08-16 version rejected some valid Xplore ClueData files.
 - New trouble-shooting menu option - automatically produces a comprehensive logfile
 - **Menu location:** Start/All Programs/CliniClue Xplore/Support/CliniClue Diagnostic Report)

In the above example you would right click on **CliniClue Xplore Setup (2010-08-23)** to start saving the file. Please note this may take some time as the file is quite large. When complete a screen similar to the following will appear:



Click on the **Close** button. To update the software go to the directory where you saved the file and double click on the executable file which will have a name similar to **CliniClueXplore_setup_20100823.exe**. Follow the on screen prompts to complete the update.