

# **SNOB Browser Installation**

# *Table of Contents*

**INTRODUCTION .....3**

**THE SNOB APPLICATION .....4**

    SNOB DESKTOP SHORTCUT .....5

**SNOMED CT DATA .....6**

    DOWNLOADING SNOMED CT DATA .....6

**SNOMED CT DATA IN SNOB .....7**

    SNOMED CT DATABASE IN SNOB .....8

    RECLAIMING SPACE .....13

**UPDATING SNOMED CT DATA .....14**

**UPDATING SNOB .....15**

    WITHIN THE NHS .....15

    OUTSIDE THE NHS .....15

## ***Introduction***

There are a number of browsers available which allow users to view SNOMED CT content without the need of a clinical application. This guide covers the installation of the SNOB browser and how to update the data when new versions of SNOMED CT are released.

A new version of the core SNOMED CT data is released every six months in January and July and a new version of the UK Edition of SNOMED CT every six months in April and October each year. You are advised to obtain a new version of the SNOMED CT data when there is a new release to ensure you have the most up to date content.

# The SNOB Application

Before you are able to view the SNOMED CT data you must install the SNOB browser application that will enable you to view it. To install the browser carry out the following steps:

- Go to the SNOB website download screen to download the application. It can be found at:

<http://snob.eggbird.eu/download.html>

A screen similar to the following will appear:

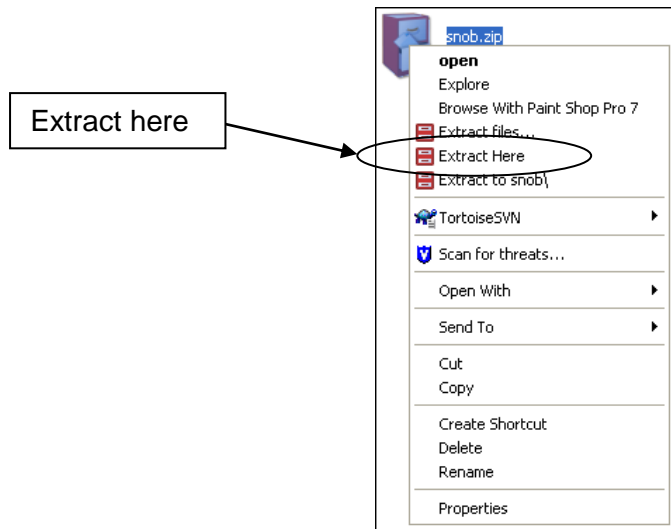


- To give you more control, **right click** on the download (in the above example it is SNOB 3.11.00) and choose **Save Target As**. Save the file into the following directory:

D:\Apps\SNOB

You will need to create the above directory. It is possible to save the file to a different location, however, for the purposes of this guide we will be using the above directory. If you choose to change this to an alternative location please remember to amend any references to the above directory.

- Once the file (SNOB.zip) has been saved you need to extract the contents of the file to this directory. Depending which application you use if you right click on the file a menu similar to the following will appear:



In the above example you would select **Extract Here** to extract the files to the directory.

Once the files have been extracted the installation of the SNOB application is complete, however, it will not contain any SNOMED CT data.

## SNOB Desktop Shortcut

---

If you wish to put a shortcut to SNOB on your desktop do the following:

- From within the SNOB directory, in this case D:\Apps\SNOB, **right click** on the file **SNOB.exe** and select **Create shortcut**.
- This will create a shortcut to SNOB within that folder. To put that shortcut on the desktop simply drag and drop it onto your desktop.

## ***SNOMED CT Data***

In order to get the latest version of the SNOMED CT data you will need to register on the Terminology Reference Data Update Distribution Service (TRUD).

**Please note that registration is not instant and can take up to 24 hours to complete.**

The TRUD site can be found at:

<https://www.uktcregistration.nss.cfh.nhs.uk/trud/>

If you encounter any problems on this site there is online help available, plus a list of FAQ's. If you are still unable to resolve your problem you can contact the Data Standards Help desk by emailing:

[datastandards@nhs.net](mailto:datastandards@nhs.net)

### **Downloading SNOMED CT Data**

---

Once you have registered on TRUD you will need to download the latest international core SNOMED CT data and the relevant SNOMED CT bi annual UK extension release for example the July core data and the October UK data. You need to download the core SNOMED CT data first and then the UK extension. The file names will be similar to the following depending on the year and month:

ihtsdo\_snomed\_6.0.0\_20100201000001.zip – international version  
nhs\_snomed\_10.0.0\_20101001000001.zip – UK version

They will be found in the following directories:

IHTSDO\7.0.0\IHTSDO\_SNOMED (international data)  
10.0.0\NHS\_SNOMED (UK data)

If you require the UK drug extension data as well, you need to download the relevant four weekly releases. Details of which release is relevant to your SNOMED CT data can be found in the read me file in the 10.0.0 directory.

Download the files into the following directories:

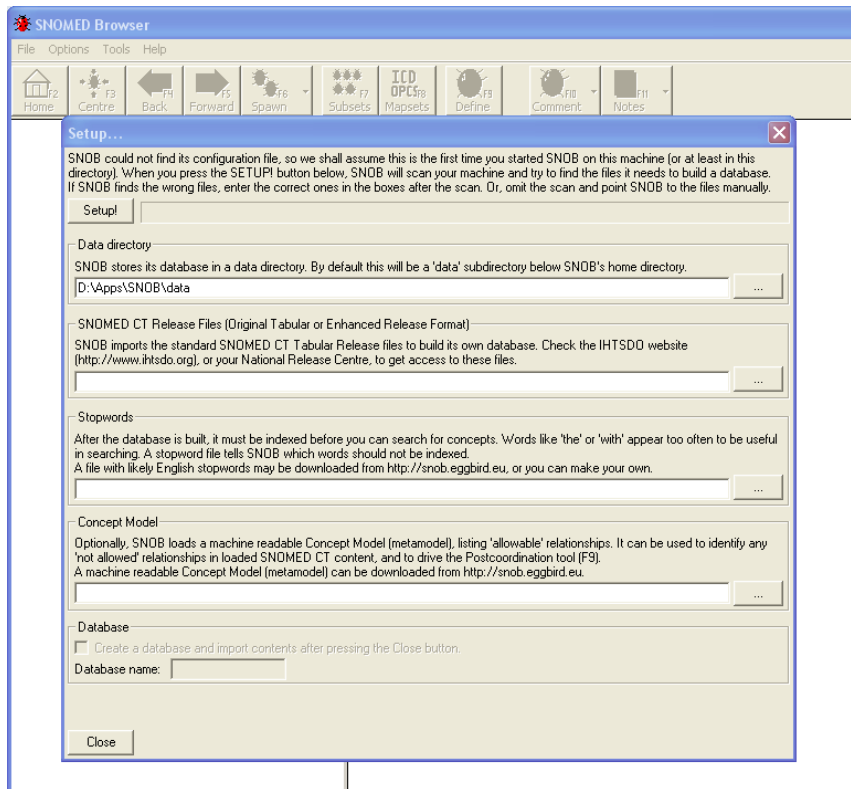
D:\Apps\SNOB\SNOMEDCT\_JULY2010  
D:\Apps\SNOB\SNOMEDCT\_OCT2010

The above directories would be relevant to the July 2010 International release and the October 2010 UK release. The directory names should reflect the release dates to make it clear which releases you are working with.

Once the files have been downloaded extract the contents of the files into the relevant directories. This may take a few minutes as the files are quite large.

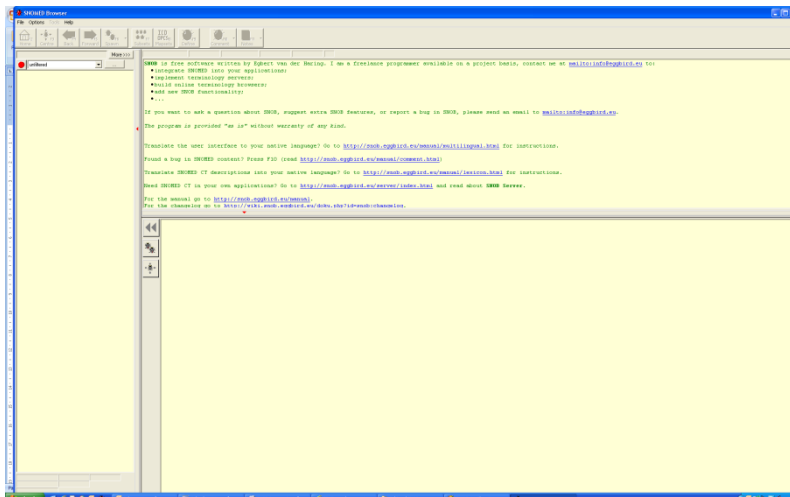
# SNOMED CT Data in SNOB

Once the files have been downloaded they need to be added into SNOB for you to browse them. You need to add the International ones first and then the UK ones. In order to do this, open SNOB and a screen similar to the following will appear:



Do not change anything on this screen as we are going to set up our own SNOMED CT databases for SNOB to use.

Click on the **Close** button at the bottom left of the screen and the screen will change to something similar to the following:

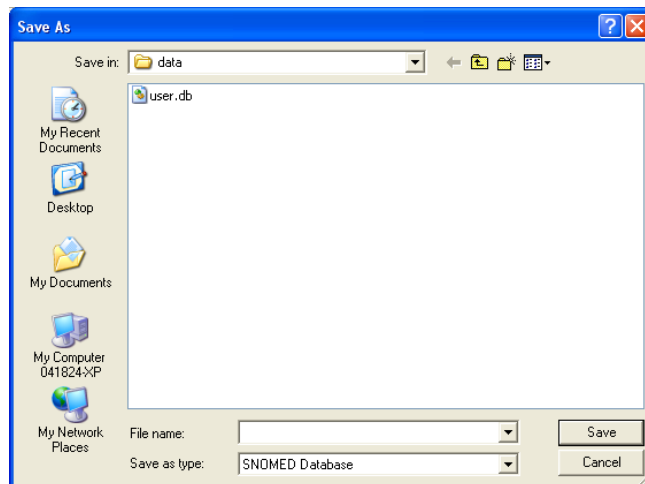


## SNOMED CT Database in SNOB

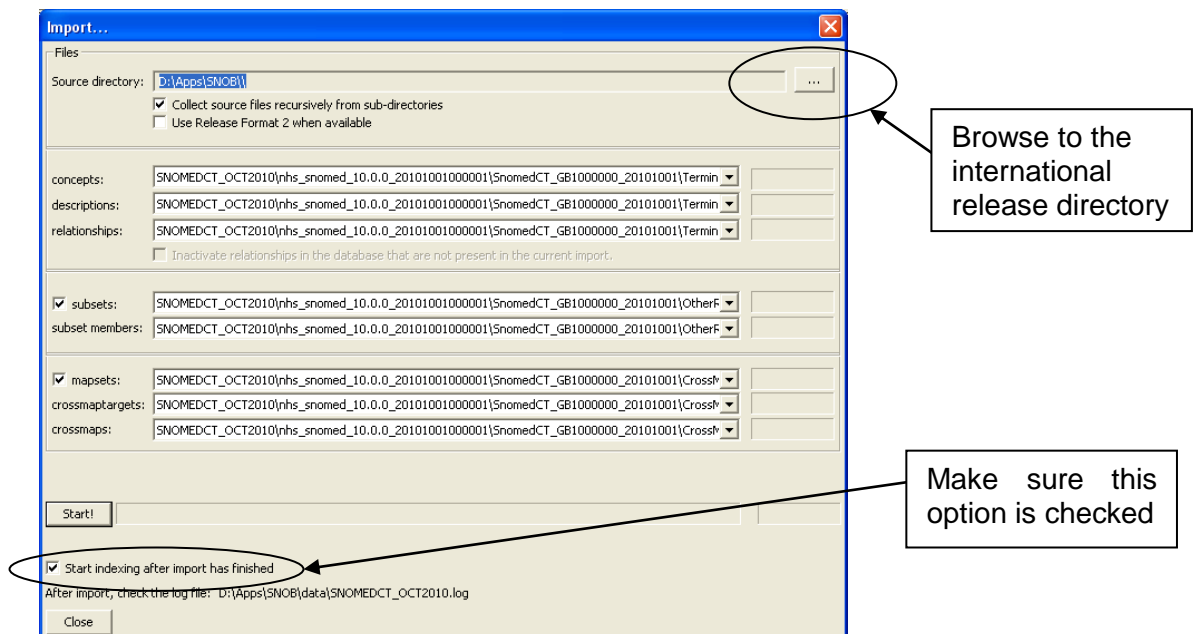
You need to import the international release first, followed by the UK release.

To create a database for the international July 2010 release do the following:

- From the menu choose **File, New** and a screen similar to the following will appear:

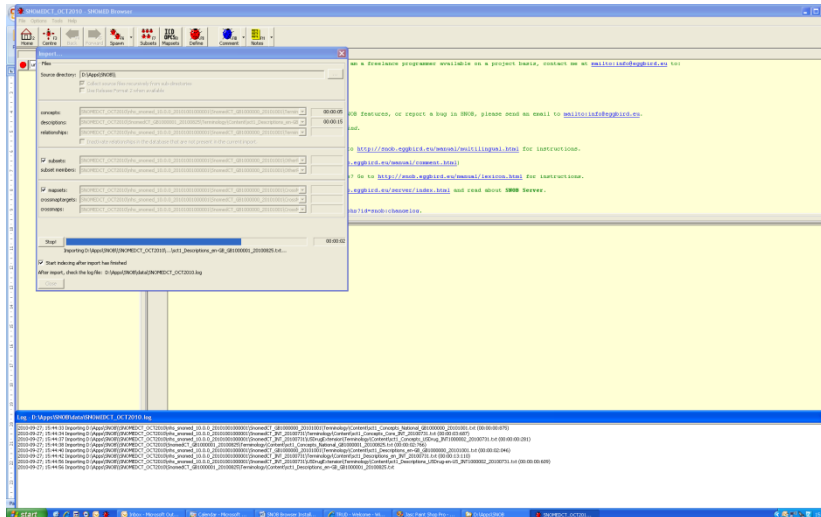


- In the **File name** box enter a suitable name. In this case we are going to call ours **SNOMEDCT\_JULY2010** to reflect the fact that it is the July release of the SNOMED CT data.
- Click on **Save** and a screen similar to the following will appear:

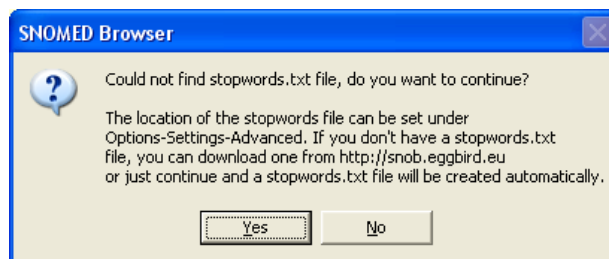


- Browse to the international release directory, in our case **D:\Apps\SNOB\SNOMEDCT\_JULY2010**, by clicking on the browse button as show above.

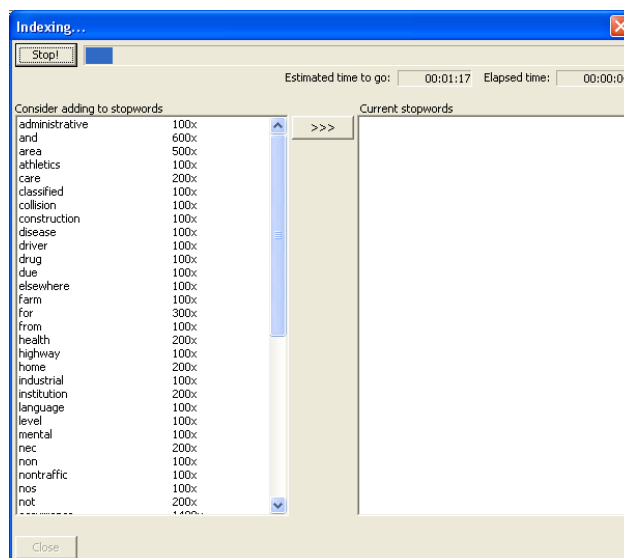
- Make sure the **Start indexing after import has finished** check box is ticked and then click on **Start** to start importing the data. The import and indexing may take several minutes so please allow this to run. As it works your screen will be similar to the following:



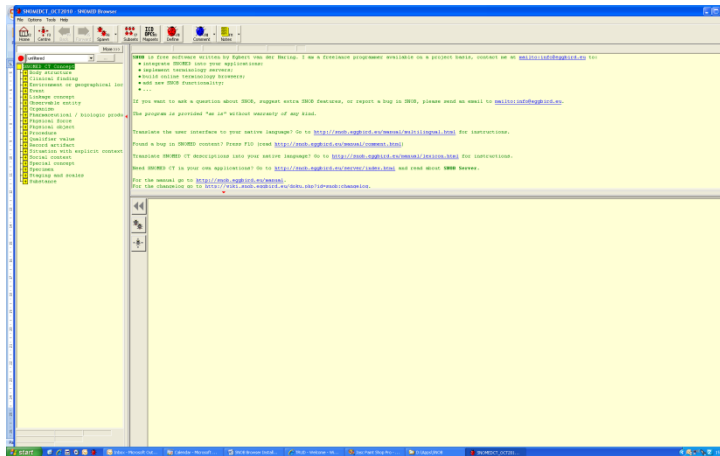
- When it has completed the following message will appear:



- Click on **Yes** to automatically create a stopwords file. The system will generate a list and the screen will be similar to the following:



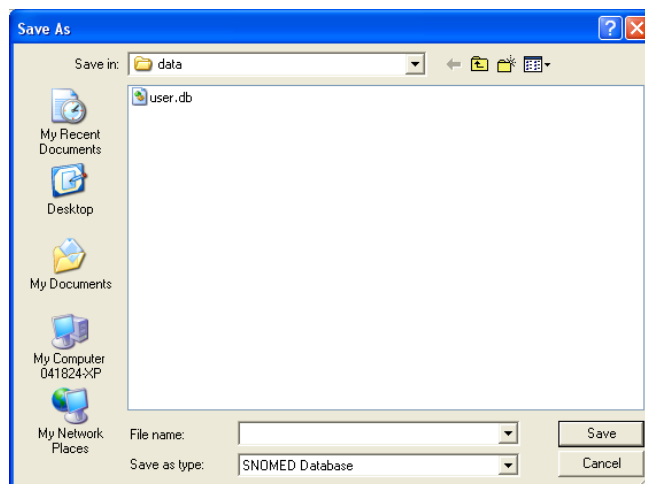
The above may take a few minutes to complete. Once it has completed the list it will disappear and take you back to the main screen which will be similar to the following:



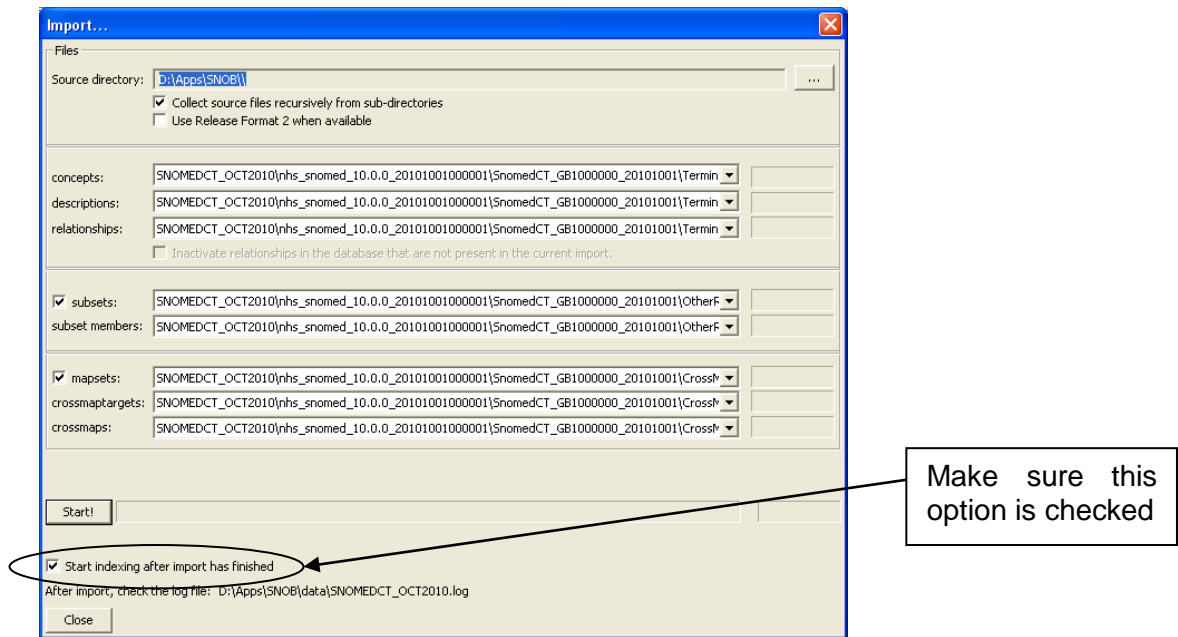
You then need to import the UK release of the data, in this case the October 2010 release, so that you have both versions installed. The process is the same as for the international release.

To create a database for the October 2010 release do the following:

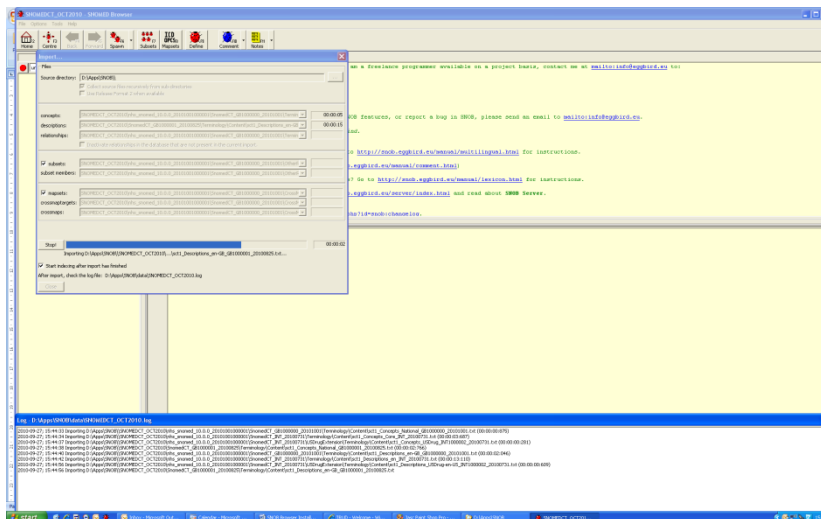
- From the menu choose **File, New** and a screen similar to the following will appear:



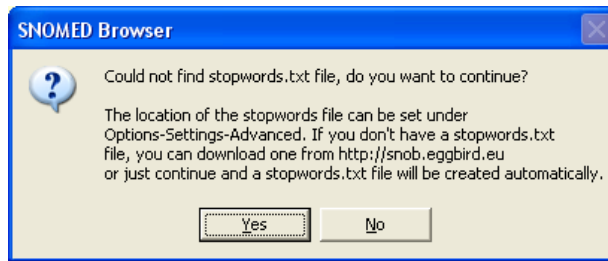
- In the **File name** box enter a suitable name. In this case we are going to call ours **SNOMEDCT\_OCT2010** to reflect the fact that it is the October release of the SNOMED CT data.
- Click on **Save** and a screen similar to the following will appear:



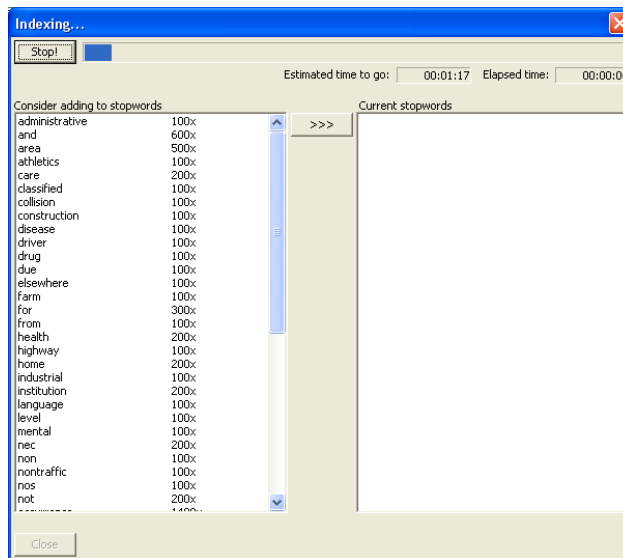
- Browse to the UK release directory, in our case **D:\Apps\SNOB\SNOMEDCT\_OCT2010**, by clicking on the browse button as show above.
- Make sure the **Start indexing after import has finished** check box is ticked and then click on **Start** to start importing the data. The import and indexing may take several minutes so please allow this to run. As it works your screen will be similar to the following:



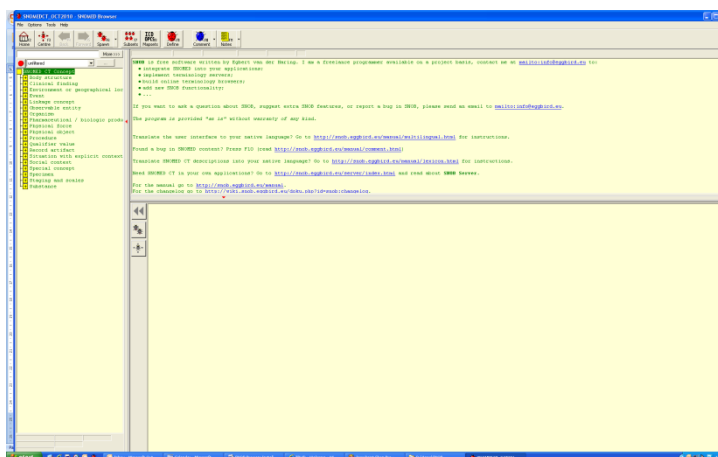
- When it has completed the following message will appear:



- Click on **Yes** to automatically create a stopwords file. The system will generate a list and the screen will be similar to the following:



The above may take a few minutes to complete. Once it has completed the list it will disappear and take you back to the main screen which will be similar to the following:



The SNOMED CT data is now ready for you to browse using the SNOB browser. For help on using the SNOB browser please refer to the online help found at:

<http://snob.eggbird.eu/>

It is also possible to create your own stopwords file. More information on how to do this can be found on the SNOB website:

<http://snob.eggbird.eu/downloads/stopwords.html>

## **Reclaiming Space**

---

Once the data has been successfully imported into SNOB it is good practice to delete the files that are no longer required as they are quite large and take up considerable space on your hard drive.

In this case you can delete the directories:

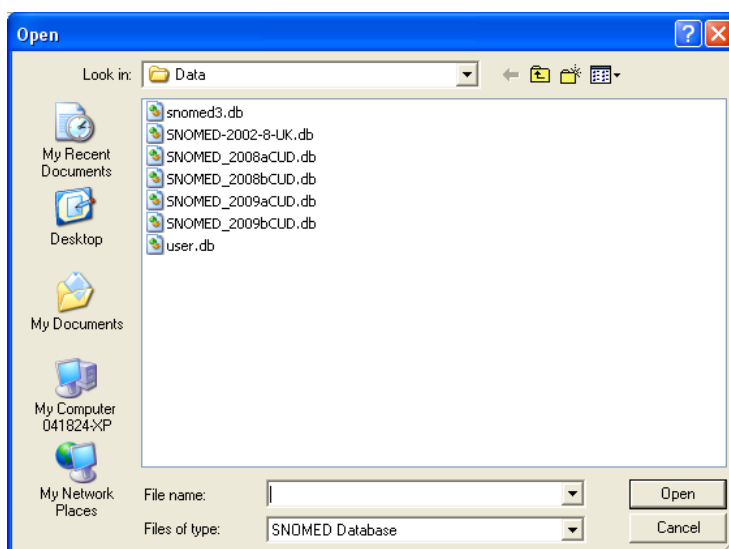
D:\Apps\SNOB\SNOMEDCT\_JULY2010  
D:\Apps\SNOB\SNOMEDCT\_OCT2010

## Updating SNOMED CT Data

As SNOMED CT gets updated every six months both nationally and in the UK it will be necessary to update the SNOMED CT data within the SNOB browser. This should be done after each update of the UK release so that the relevant international release can be imported at the same time. The process is almost identical to the above but using new directory names and new names for the database files that SNOB builds from it. For example to download the files for the January 2011 release:

- Create a directory:  
D:\App\SNOB\SNOMEDCT\_JAN2011
- Go to TRUD and download the relevant files into the above directory and extract the contents of the files into that directory.
- Open SNOB and from the menu choose **File, New** and name the database SNOMEDCT\_JAN2011 and click on **Save**.
- Update the system as described previously.
- Repeat these steps for the April 2011 UK release of SNOMED CT.

By creating the different databases for the different versions of SNOMED CT you are able to go back to different versions within SNOB by opening the relevant database. In the example below there are several different versions of SNOMED CT available to use:



To use any of these from within SNOB choose **File, Open** and select the version of SNOMED CT you wish to work with.

## *Updating SNOB*

### **Within the NHS**

---

---

Because of the NHS firewall, SNOB can't check for updates of SNOB itself. There are intermittent releases of SNOB, so it is worth checking the website regularly for new releases. Any new releases can be installed as instructed on page 4 of this guide except you extract the new release into exactly the same directory as your original SNOB installation, in this case D:\Apps\SNOB, overwriting any existing files it asks you about.

You don't normally need to run a new SNOMED CT import unless the underlying database format has been changed, but this will be made clear by the update.

### **Outside the NHS**

---

---

Any installations of SNOB outside of the NHS, that aren't locked down by firewalls, will automatically check the SNOB website for updates to SNOB and inform the user that an update is available. As above any new releases can be installed as instructed on page 4 of this guide except you extract the new release into exactly the same directory as your original SNOB installation, in this case D:\Apps\SNOB, overwriting any existing files it asks you about.

You don't normally need to run a new SNOMED CT import unless the underlying database format has been changed, but this will be made clear by the update.